



Test Report

No.: EKR23500796

Date: 25-May-2023

Page: 1 of 15

LINTEC CORPORATION

1-1-1 KOISHIKAWA, BUNKYO-KU, TOKYO 112-0002 JAPAN

The following sample(s) was/were submitted and identified by the applicant as:

Sample Submitted By : LINTEC CORPORATION
 Sample Name : ADWILL LC89R SERIES(REGARDLESS OF THICKNESS AND SIZE)
 Order No. : 230427-LS-RN-01-119

=====
 Sample Receiving Date : 15-May-2023 and 23-May-2023
 Testing Period : 15-May-2023 to 25-May-2023

Test Requested : (1) As specified by client, with reference to RoHS 2011/65/EU Annex II and amending Directive (EU) 2015/863 to determine Cadmium, Lead, Mercury, Cr(VI), PBBs, PBDEs, DBP, BBP, DEHP, DIBP contents in the submitted sample(s).
 (2) Please refer to next pages for the other item(s).

Test Results : Please refer to following pages.

Conclusion : (1) Based on the performed tests on selected part of submitted sample(s), the test results of Cadmium, Lead, Mercury, Cr(VI), PBBs, PBDEs, DBP, BBP, DEHP, DIBP comply with the limits as set by RoHS Directive (EU) 2015/863 amending Annex II to Directive 2011/65/EU.

Ray Chang

Ray Chang, Ph.D./Department Manager
Signed for and on behalf of
SGS TAIWAN LTD.

Chemical Laboratory-Kaohsiung



PIN CODE: 27B411DE

This document is issued by the Company subject to its General Conditions of Service printed overleaf, available on request or accessible at <https://www.sgs.com.tw/terms-of-service> and, for electronic format documents, subject to Terms and Conditions for Electronic Documents at <https://www.sgs.com.tw/terms-of-service>. Attention is drawn to the limitation of liability, indemnification and jurisdiction issues defined therein. Any holder of this document is advised that information contained hereon reflects the Company's findings at the time of its intervention only and within the limits of client's instruction, if any. The Company's sole responsibility is to its Client and this document does not exonerate parties to a transaction from exercising all their rights and obligations under the transaction documents. This document cannot be reproduced, except in full, without prior written approval of the Company. Any unauthorized alteration, forgery or falsification of the content or appearance of this document is unlawful and offenders may be prosecuted to the fullest extent of the law. Unless otherwise stated the results shown in this test report refer only to the sample(s) tested.

Test Report

No.: EKR23500796

Date: 25-May-2023

Page: 2 of 15

LINTEC CORPORATION

1-1-1 KOISHIKAWA, BUNKYO-KU, TOKYO 112-0002 JAPAN

Test Part Description

No.1 : BLACK PLASTIC FILM (EXCLUDING THE RELEASE LINNER)

Test Result(s)

| Test Item(s) | Method | Unit | MDL | Result | Limit |
|----------------------------|---|-------|------|--------|-------|
| | | | | No.1 | |
| Cadmium (Cd) | With reference to IEC 62321-5: 2013, analysis was performed by ICP-OES. | mg/kg | 2 | n.d. | 100 |
| Lead (Pb) | With reference to IEC 62321-5: 2013, analysis was performed by ICP-OES. | mg/kg | 2 | n.d. | 1000 |
| Mercury (Hg) | With reference to IEC 62321-4: 2013+ AMD1: 2017, analysis was performed by ICP-OES. | mg/kg | 2 | n.d. | 1000 |
| Hexavalent Chromium Cr(VI) | With reference to IEC 62321-7-2: 2017, analysis was performed by UV-VIS. | mg/kg | 8 | n.d. | 1000 |
| Monobromobiphenyl | With reference to IEC 62321-6: 2015, analysis was performed by GC/MS. | mg/kg | 5 | n.d. | - |
| Dibromobiphenyl | | mg/kg | 5 | n.d. | - |
| Tribromobiphenyl | | mg/kg | 5 | n.d. | - |
| Tetrabromobiphenyl | | mg/kg | 5 | n.d. | - |
| Pentabromobiphenyl | | mg/kg | 5 | n.d. | - |
| Hexabromobiphenyl | | mg/kg | 5 | n.d. | - |
| Heptabromobiphenyl | | mg/kg | 5 | n.d. | - |
| Octabromobiphenyl | | mg/kg | 5 | n.d. | - |
| Nonabromobiphenyl | | mg/kg | 5 | n.d. | - |
| Decabromobiphenyl | | mg/kg | 5 | n.d. | - |
| Sum of PBBs | | mg/kg | - | n.d. | 1000 |
| Monobromodiphenyl ether | | mg/kg | 5 | n.d. | - |
| Dibromodiphenyl ether | | mg/kg | 5 | n.d. | - |
| Tribromodiphenyl ether | | mg/kg | 5 | n.d. | - |
| Tetrabromodiphenyl ether | | mg/kg | 5 | n.d. | - |
| Pentabromodiphenyl ether | | mg/kg | 5 | n.d. | - |
| Hexabromodiphenyl ether | | mg/kg | 5 | n.d. | - |
| Heptabromodiphenyl ether | | mg/kg | 5 | n.d. | - |
| Octabromodiphenyl ether | | mg/kg | 5 | n.d. | - |
| Nonabromodiphenyl ether | | mg/kg | 5 | n.d. | - |
| Decabromodiphenyl ether | mg/kg | 5 | n.d. | - | |
| Sum of PBDEs | mg/kg | - | n.d. | 1000 | |

This document is issued by the Company subject to its General Conditions of Service printed overleaf, available on request or accessible at <https://www.sgs.com.tw/terms-of-service> and, for electronic format documents, subject to Terms and Conditions for Electronic Documents at <https://www.sgs.com.tw/terms-of-service>. Attention is drawn to the limitation of liability, indemnification and jurisdiction issues defined therein. Any holder of this document is advised that information contained hereon reflects the Company's findings at the time of its intervention only and within the limits of client's instruction, if any. The Company's sole responsibility is to its Client and this document does not exonerate parties to a transaction from exercising all their rights and obligations under the transaction documents. This document cannot be reproduced, except in full, without prior written approval of the Company. Any unauthorized alteration, forgery or falsification of the content or appearance of this document is unlawful and offenders may be prosecuted to the fullest extent of the law. Unless otherwise stated the results shown in this test report refer only to the sample(s) tested.

Test Report

No.: EKR23500796

Date: 25-May-2023

Page: 3 of 15

LINTEC CORPORATION

1-1-1 KOISHIKAWA, BUNKYO-KU, TOKYO 112-0002 JAPAN

| Test Item(s) | Method | Unit | MDL | Result | Limit |
|--|---|-------|------|----------|-------|
| | | | | No.1 | |
| Butyl benzyl phthalate (BBP) | With reference to IEC 62321-8: 2017, analysis was performed by GC/MS. | mg/kg | 50 | n.d. | 1000 |
| Dibutyl phthalate (DBP) | | mg/kg | 50 | n.d. | 1000 |
| Diisobutyl phthalate (DIBP) | | mg/kg | 50 | n.d. | 1000 |
| Di-(2-ethylhexyl) phthalate (DEHP) | | mg/kg | 50 | n.d. | 1000 |
| Diisononyl phthalate (DINP) (CAS No.: 28553-12-0, 68515-48-0) | | mg/kg | 50 | n.d. | - |
| Diisodecyl phthalate (DIDP) (CAS No.: 26761-40-0, 68515-49-1) | | mg/kg | 50 | n.d. | - |
| Di-n-octyl phthalate (DNOP) (CAS No.: 117-84-0) | | mg/kg | 50 | n.d. | - |
| Antimony (Sb) (CAS No.: 7440-36-0) | With reference to US EPA 3052: 1996, analysis was performed by ICP-OES. | mg/kg | 2 | n.d. | - |
| Beryllium (Be) (CAS No.: 7440-41-7) | With reference to US EPA 3052: 1996, analysis was performed by ICP-OES. | mg/kg | 2 | n.d. | - |
| Hexabromocyclododecane (HBCDD) and all major diastereoisomers identified (α - HBCDD, β - HBCDD, γ - HBCDD) (CAS No.: 25637-99-4, 3194-55-6 (134237-51-7, 134237-50-6, 134237-52-8)) | With reference to IEC 62321: 2008, analysis was performed by GC/MS. | mg/kg | 5 | n.d. | - |
| Perfluorooctanoic acid (PFOA) and its salt (CAS No.: 335-67-1 and its salts) | With reference to CEN/TS 15968: 2010, analysis was performed by LC/MS/MS. | mg/kg | 0.01 | n.d. | - |
| PFOS and its salts (CAS No.: 1763-23-1 and its salts) | With reference to CEN/TS 15968: 2010, analysis was performed by LC/MS/MS. | mg/kg | 0.01 | n.d. | - |
| Polychlorinated biphenyls (PCBs) | With reference to US EPA 3550C: 2007, analysis was performed by GC/MS. | mg/kg | 0.5 | n.d. | - |
| Polychlorinated naphthalene (PCNs) | With reference to US EPA 3550C: 2007, analysis was performed by GC/MS. | mg/kg | 5 | n.d. | - |
| Polychlorinated terphenyls (PCTs) | With reference to US EPA 3550C: 2007, analysis was performed by GC/MS. | mg/kg | 0.5 | n.d. | - |
| Short Chain Chlorinated Paraffins(C10-C13) (SCCP) (CAS No.: 85535-84-8) | With reference to ISO 18219-1: 2021, analysis was performed by GC/MS. | mg/kg | 50 | n.d. | - |
| Polyvinyl chloride (PVC) | With reference to ASTM E1252: 2021, analysis was performed by FT-IR and Flame Test. | ** | - | Negative | - |
| Tributyl tin (TBT) | With reference to ISO 17353: 2004, analysis was performed by GC/FPD. | mg/kg | 0.03 | n.d. | - |

This document is issued by the Company subject to its General Conditions of Service printed overleaf, available on request or accessible at <https://www.sgs.com.tw/terms-of-service> and, for electronic format documents, subject to Terms and Conditions for Electronic Documents at <https://www.sgs.com.tw/terms-of-service>. Attention is drawn to the limitation of liability, indemnification and jurisdiction issues defined therein. Any holder of this document is advised that information contained hereon reflects the Company's findings at the time of its intervention only and within the limits of client's instruction, if any. The Company's sole responsibility is to its Client and this document does not exonerate parties to a transaction from exercising all their rights and obligations under the transaction documents. This document cannot be reproduced, except in full, without prior written approval of the Company. Any unauthorized alteration, forgery or falsification of the content or appearance of this document is unlawful and offenders may be prosecuted to the fullest extent of the law. Unless otherwise stated the results shown in this test report refer only to the sample(s) tested.

| Test Item(s) | Method | Unit | MDL | Result | Limit |
|--|--|-------|-------|--------|-------|
| | | | | No.1 | |
| Bis(tributyltin) oxide (TBTO) (CAS No.: 56-35-9) | Calculated from the result of Tributyl Tin (TBT). | mg/kg | 0.03▲ | n.d. | - |
| Triphenyl tin (TPT) | With reference to ISO 17353: 2004, analysis was performed by GC/FPD. | mg/kg | 0.03 | n.d. | - |
| Dioctyl tin (DOT) | With reference to ISO 17353: 2004, analysis was performed by GC/FPD. | mg/kg | 0.03 | n.d. | - |
| Dibutyl tin (DBT) | With reference to ISO 17353: 2004, analysis was performed by GC/FPD. | mg/kg | 0.03 | n.d. | - |
| Fluorine (F) (CAS No.: 14762-94-8) | With reference to BS EN 14582: 2016, analysis was performed by IC. | mg/kg | 50 | n.d. | - |
| Chlorine (Cl) (CAS No.: 22537-15-1) | | mg/kg | 50 | 114 | - |
| Bromine (Br) (CAS No.: 10097-32-2) | | mg/kg | 50 | n.d. | - |
| Iodine (I) (CAS No.: 14362-44-8) | | mg/kg | 50 | n.d. | - |

Note :

1. mg/kg = ppm ; 0.1wt% = 0.1% = 1000ppm
2. MDL = Method Detection Limit
3. n.d. = Not Detected (Less than MDL)
4. "-" = Not Regulated
5. **= Qualitative analysis (No Unit)
6. Negative = Undetectable ; Positive = Detectable
7. PFOS and its salts including :
CAS No.: 1763-23-1, 2795-39-3, 29457-72-5, 29081-56-9, 70225-14-8, 56773-42-3, 251099-16-8, 307-35-7, 91036-71-4, 4021-47-0 and others.
8. PFOA and its salts including :
CAS No.: 335-67-1, 335-95-5, 2395-00-8, 335-93-3, 335-66-0, 3825-26-1 and others.
9. ▲ : The MDL was evaluated for element / tested substance.

Conversion Formula : $AX = A \times F$

| AX | A | F |
|------------------------------|--------------------|--------|
| Bis(tributyltin)oxide (TBTO) | Tributyl Tin (TBT) | 1.0276 |

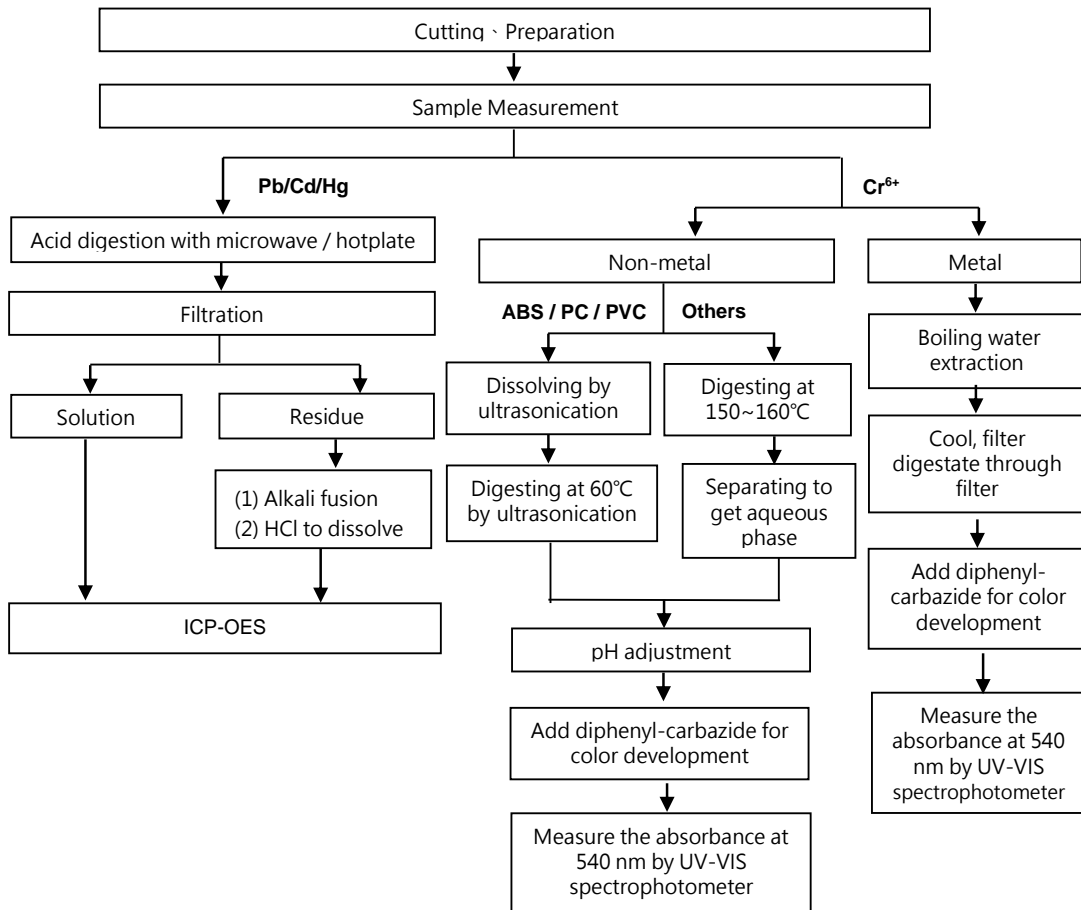
Parameter Conversion Table : https://eecloud.sgs.com/Region_TW/DocDownload.aspx?name=Others

10. Unless otherwise stated , the decision rule for conformity reporting is based on Binary Statement for Simple Acceptance Rule (w=0) stated in ILAC-G8:09/2019. According to this rule, the judgement of conformity is based on the comparing test results with limits.

Analytical flow chart of Heavy Metal

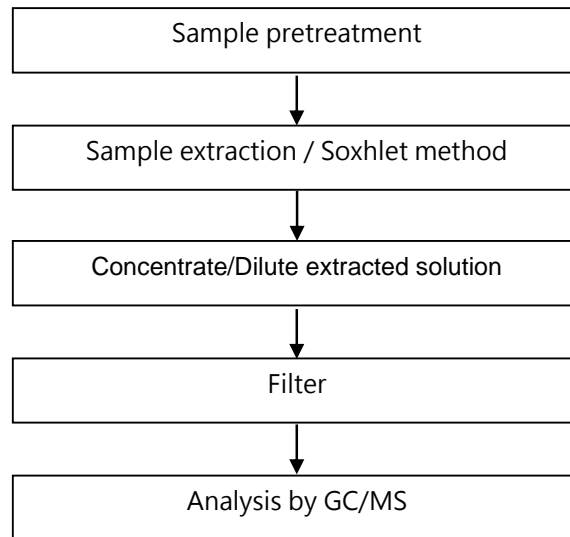
These samples were dissolved totally by pre-conditioning method according to below flow chart.

(Cr⁶⁺ test method excluded)



This document is issued by the Company subject to its General Conditions of Service printed overleaf, available on request or accessible at <https://www.sgs.com.tw/terms-of-service> and, for electronic format documents, subject to Terms and Conditions for Electronic Documents at <https://www.sgs.com.tw/terms-of-service>. Attention is drawn to the limitation of liability, indemnification and jurisdiction issues defined therein. Any holder of this document is advised that information contained hereon reflects the Company's findings at the time of its intervention only and within the limits of client's instruction, if any. The Company's sole responsibility is to its Client and this document does not exonerate parties to a transaction from exercising all their rights and obligations under the transaction documents. This document cannot be reproduced, except in full, without prior written approval of the Company. Any unauthorized alteration, forgery or falsification of the content or appearance of this document is unlawful and offenders may be prosecuted to the fullest extent of the law. Unless otherwise stated the results shown in this test report refer only to the sample(s) tested.

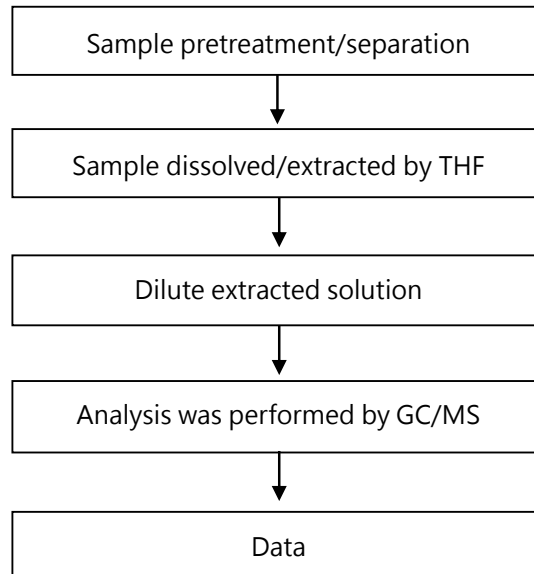
PBB/PBDE analytical FLOW CHART



This document is issued by the Company subject to its General Conditions of Service printed overleaf, available on request or accessible at <https://www.sgs.com.tw/terms-of-service> and, for electronic format documents, subject to Terms and Conditions for Electronic Documents at <https://www.sgs.com.tw/terms-of-service>. Attention is drawn to the limitation of liability, indemnification and jurisdiction issues defined therein. Any holder of this document is advised that information contained hereon reflects the Company's findings at the time of its intervention only and within the limits of client's instruction, if any. The Company's sole responsibility is to its Client and this document does not exonerate parties to a transaction from exercising all their rights and obligations under the transaction documents. This document cannot be reproduced, except in full, without prior written approval of the Company. Any unauthorized alteration, forgery or falsification of the content or appearance of this document is unlawful and offenders may be prosecuted to the fullest extent of the law. Unless otherwise stated the results shown in this test report refer only to the sample(s) tested.

Analytical flow chart of phthalate content

【 Test method: IEC 62321-8 】

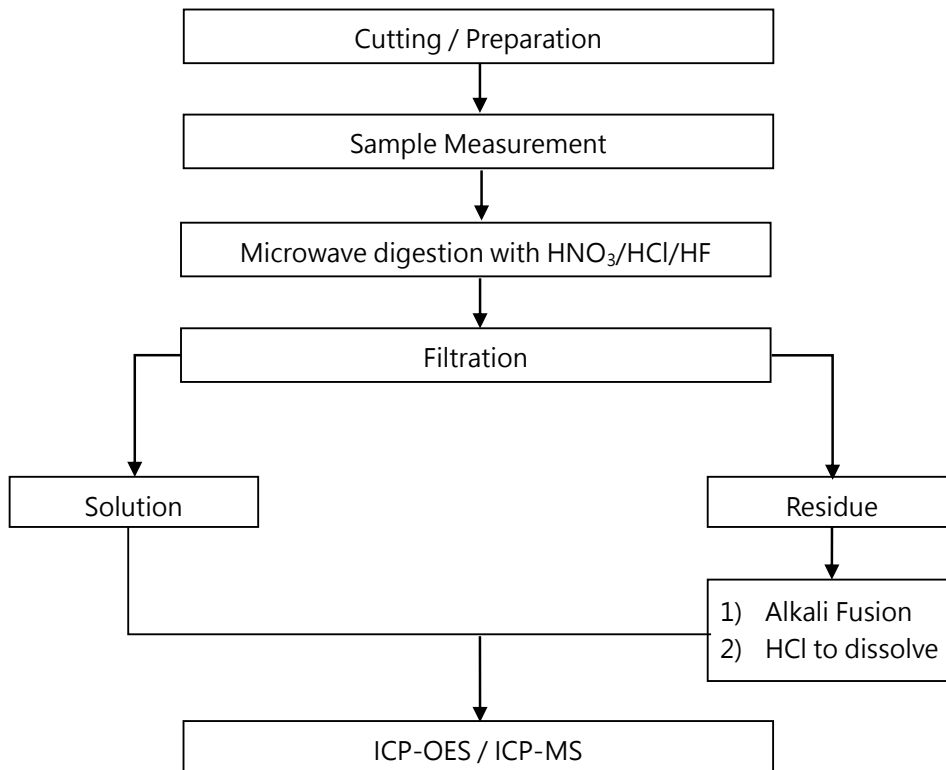


This document is issued by the Company subject to its General Conditions of Service printed overleaf, available on request or accessible at <https://www.sgs.com.tw/terms-of-service> and, for electronic format documents, subject to Terms and Conditions for Electronic Documents at <https://www.sgs.com.tw/terms-of-service>. Attention is drawn to the limitation of liability, indemnification and jurisdiction issues defined therein. Any holder of this document is advised that information contained hereon reflects the Company's findings at the time of its intervention only and within the limits of client's instruction, if any. The Company's sole responsibility is to its Client and this document does not exonerate parties to a transaction from exercising all their rights and obligations under the transaction documents. This document cannot be reproduced, except in full, without prior written approval of the Company. Any unauthorized alteration, forgery or falsification of the content or appearance of this document is unlawful and offenders may be prosecuted to the fullest extent of the law. Unless otherwise stated the results shown in this test report refer only to the sample(s) tested.

Analytical flow chart of Elements (Heavy metal included)

These samples were dissolved totally by pre-conditioning method according to below flow chart.

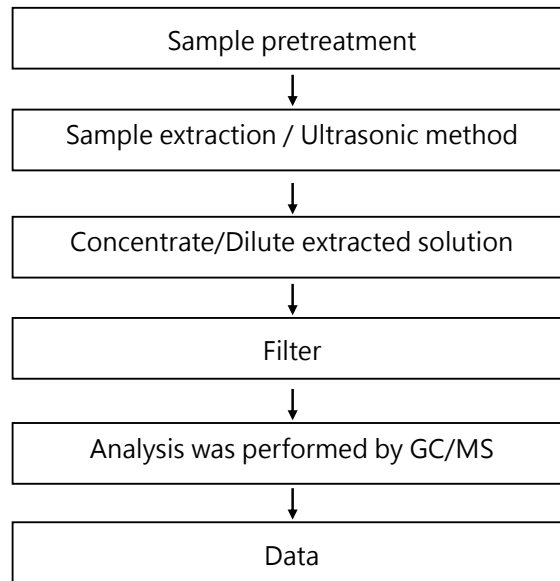
【 Reference method : US EPA 3051 、 US EPA 3052 】



* US EPA 3051 method does not add HF.

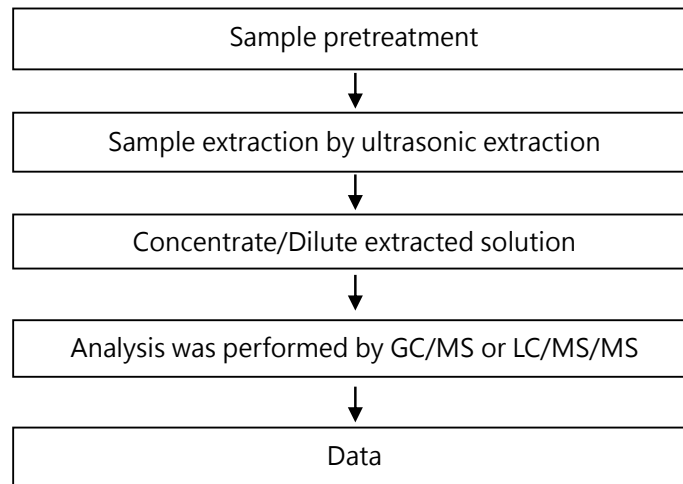
This document is issued by the Company subject to its General Conditions of Service printed overleaf, available on request or accessible at <https://www.sgs.com.tw/terms-of-service> and, for electronic format documents, subject to Terms and Conditions for Electronic Documents at <https://www.sgs.com.tw/terms-of-service>. Attention is drawn to the limitation of liability, indemnification and jurisdiction issues defined therein. Any holder of this document is advised that information contained hereon reflects the Company's findings at the time of its intervention only and within the limits of client's instruction, if any. The Company's sole responsibility is to its Client and this document does not exonerate parties to a transaction from exercising all their rights and obligations under the transaction documents. This document cannot be reproduced, except in full, without prior written approval of the Company. Any unauthorized alteration, forgery or falsification of the content or appearance of this document is unlawful and offenders may be prosecuted to the fullest extent of the law. Unless otherwise stated the results shown in this test report refer only to the sample(s) tested.

Analytical flow chart - HBCDD



This document is issued by the Company subject to its General Conditions of Service printed overleaf, available on request or accessible at <https://www.sgs.com.tw/terms-of-service> and, for electronic format documents, subject to Terms and Conditions for Electronic Documents at <https://www.sgs.com.tw/terms-of-service>. Attention is drawn to the limitation of liability, indemnification and jurisdiction issues defined therein. Any holder of this document is advised that information contained hereon reflects the Company's findings at the time of its intervention only and within the limits of client's instruction, if any. The Company's sole responsibility is to its Client and this document does not exonerate parties to a transaction from exercising all their rights and obligations under the transaction documents. This document cannot be reproduced, except in full, without prior written approval of the Company. Any unauthorized alteration, forgery or falsification of the content or appearance of this document is unlawful and offenders may be prosecuted to the fullest extent of the law. Unless otherwise stated the results shown in this test report refer only to the sample(s) tested.

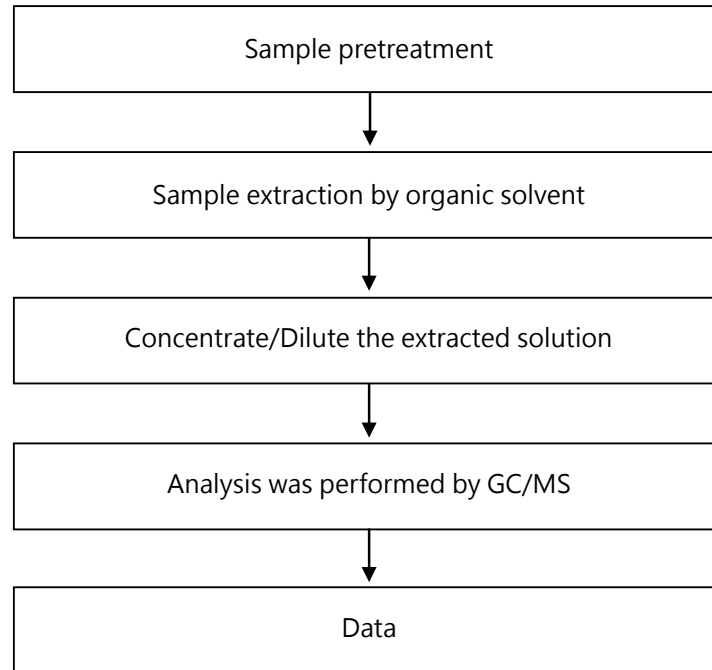
Analytical flow chart – PFAS (including PFOA/PFOS/its related compound, etc.)



This document is issued by the Company subject to its General Conditions of Service printed overleaf, available on request or accessible at <https://www.sgs.com.tw/terms-of-service> and, for electronic format documents, subject to Terms and Conditions for Electronic Documents at <https://www.sgs.com.tw/terms-of-service>. Attention is drawn to the limitation of liability, indemnification and jurisdiction issues defined therein. Any holder of this document is advised that information contained hereon reflects the Company's findings at the time of its intervention only and within the limits of client's instruction, if any. The Company's sole responsibility is to its Client and this document does not exonerate parties to a transaction from exercising all their rights and obligations under the transaction documents. This document cannot be reproduced, except in full, without prior written approval of the Company. Any unauthorized alteration, forgery or falsification of the content or appearance of this document is unlawful and offenders may be prosecuted to the fullest extent of the law. Unless otherwise stated the results shown in this test report refer only to the sample(s) tested.

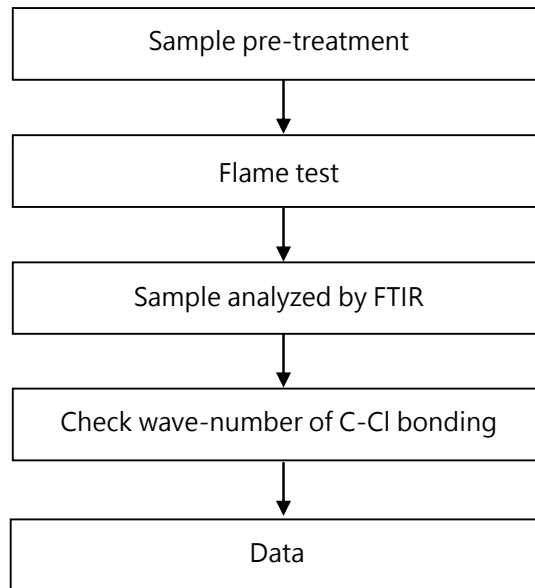
Analytical flow chart

* Apply to: PCBs, PCNs, PCTs, Mirex, Chlorinated Paraffins, DBBT



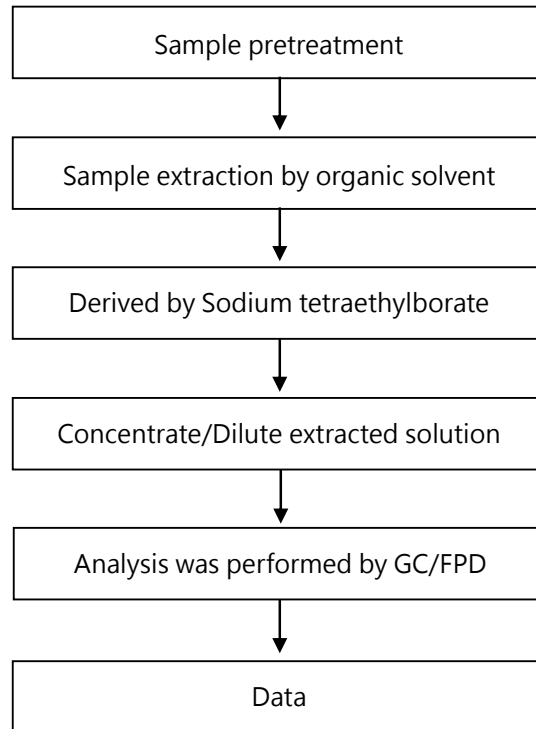
This document is issued by the Company subject to its General Conditions of Service printed overleaf, available on request or accessible at <https://www.sgs.com.tw/terms-of-service> and, for electronic format documents, subject to Terms and Conditions for Electronic Documents at <https://www.sgs.com.tw/terms-of-service>. Attention is drawn to the limitation of liability, indemnification and jurisdiction issues defined therein. Any holder of this document is advised that information contained hereon reflects the Company's findings at the time of its intervention only and within the limits of client's instruction, if any. The Company's sole responsibility is to its Client and this document does not exonerate parties to a transaction from exercising all their rights and obligations under the transaction documents. This document cannot be reproduced, except in full, without prior written approval of the Company. Any unauthorized alteration, forgery or falsification of the content or appearance of this document is unlawful and offenders may be prosecuted to the fullest extent of the law. Unless otherwise stated the results shown in this test report refer only to the sample(s) tested.

Analysis flow chart - PVC



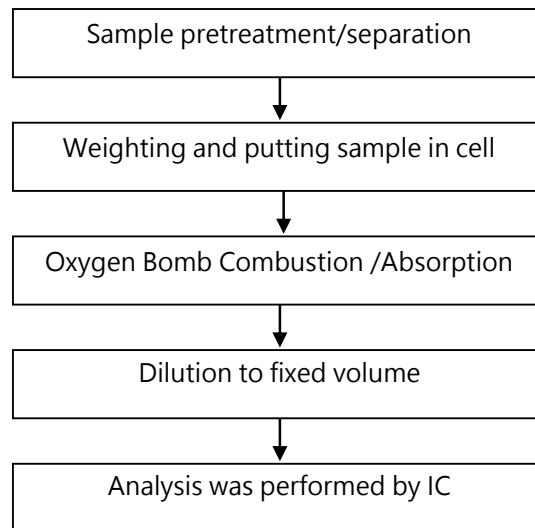
This document is issued by the Company subject to its General Conditions of Service printed overleaf, available on request or accessible at <https://www.sgs.com.tw/terms-of-service> and, for electronic format documents, subject to Terms and Conditions for Electronic Documents at <https://www.sgs.com.tw/terms-of-service>. Attention is drawn to the limitation of liability, indemnification and jurisdiction issues defined therein. Any holder of this document is advised that information contained hereon reflects the Company's findings at the time of its intervention only and within the limits of client's instruction, if any. The Company's sole responsibility is to its Client and this document does not exonerate parties to a transaction from exercising all their rights and obligations under the transaction documents. This document cannot be reproduced, except in full, without prior written approval of the Company. Any unauthorized alteration, forgery or falsification of the content or appearance of this document is unlawful and offenders may be prosecuted to the fullest extent of the law. Unless otherwise stated the results shown in this test report refer only to the sample(s) tested.

Analytical flow chart - Organic-Tin



This document is issued by the Company subject to its General Conditions of Service printed overleaf, available on request or accessible at <https://www.sgs.com.tw/terms-of-service> and, for electronic format documents, subject to Terms and Conditions for Electronic Documents at <https://www.sgs.com.tw/terms-of-service>. Attention is drawn to the limitation of liability, indemnification and jurisdiction issues defined therein. Any holder of this document is advised that information contained hereon reflects the Company's findings at the time of its intervention only and within the limits of client's instruction, if any. The Company's sole responsibility is to its Client and this document does not exonerate parties to a transaction from exercising all their rights and obligations under the transaction documents. This document cannot be reproduced, except in full, without prior written approval of the Company. Any unauthorized alteration, forgery or falsification of the content or appearance of this document is unlawful and offenders may be prosecuted to the fullest extent of the law. Unless otherwise stated the results shown in this test report refer only to the sample(s) tested.

Analytical flow chart of Halogen



This document is issued by the Company subject to its General Conditions of Service printed overleaf, available on request or accessible at <https://www.sgs.com.tw/terms-of-service> and, for electronic format documents, subject to Terms and Conditions for Electronic Documents at <https://www.sgs.com.tw/terms-of-service>. Attention is drawn to the limitation of liability, indemnification and jurisdiction issues defined therein. Any holder of this document is advised that information contained hereon reflects the Company's findings at the time of its intervention only and within the limits of client's instruction, if any. The Company's sole responsibility is to its Client and this document does not exonerate parties to a transaction from exercising all their rights and obligations under the transaction documents. This document cannot be reproduced, except in full, without prior written approval of the Company. Any unauthorized alteration, forgery or falsification of the content or appearance of this document is unlawful and offenders may be prosecuted to the fullest extent of the law. Unless otherwise stated the results shown in this test report refer only to the sample(s) tested.

* The tested sample / part is marked by an arrow if it's shown on the photo. *

EKR23500796



** End of Report **

This document is issued by the Company subject to its General Conditions of Service printed overleaf, available on request or accessible at <https://www.sgs.com.tw/terms-of-service> and, for electronic format documents, subject to Terms and Conditions for Electronic Documents at <https://www.sgs.com.tw/terms-of-service>. Attention is drawn to the limitation of liability, indemnification and jurisdiction issues defined therein. Any holder of this document is advised that information contained hereon reflects the Company's findings at the time of its intervention only and within the limits of client's instruction, if any. The Company's sole responsibility is to its Client and this document does not exonerate parties to a transaction from exercising all their rights and obligations under the transaction documents. This document cannot be reproduced, except in full, without prior written approval of the Company. Any unauthorized alteration, forgery or falsification of the content or appearance of this document is unlawful and offenders may be prosecuted to the fullest extent of the law. Unless otherwise stated the results shown in this test report refer only to the sample(s) tested.