



Contents

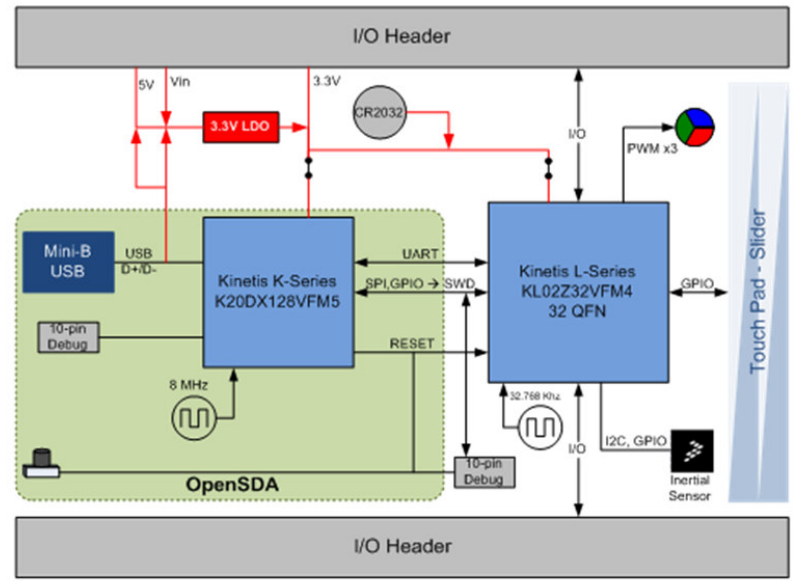
ision

page 5 Power and Peripherals

FREEDOM KL02Z

Revisions			
Rev	Description	Date	Approved
X1	Initial	Oct. 19, 2012	
A	Release	Oct. 26, 2012	
A1	1. DNP R2 2. DNP J1, J3, J7, J8, J9 and J10 3. DNP TP20 4. DNP BT1 5. DNP J4, J5 and populate R27, R28 6. Change R29, R30 from 10K(0603, 5%) to 510K (0603, 5%)	Dec. 13, 2012	
A2	1. Add Jumper J11 and 0ohm resistor R31 on net RST_IGTMCU between OpenSDA and KL02Z and DNP the Jumper 2. Add one 10ohm resistor R32 in parallel with R27 to support current measuring	Mar. 4, 2013	
B	Release	Mar. 12, 2013	
B1	Add jumper between KL02Z net SWD_CLK and OpenSDA net SWD_CLK	May. 23, 2013	
C	Add J22 for 5V regulator	May. 30, 2013	

		Microcontroller Solutions Group 6501 William Cannon Drive West Austin, TX 78752-8689	
This document contains information proprietary to Freescale Semiconductor and shall not be used for engineering design, procurement or manufacture in whole or in part without the express written permission of Freescale Semiconductor.			
Designer: Wang Peng		ICAP Classification: FCP: FUC: X PUB:	
Drawn by: Helen Xu		FRDM-KL02Z	
Table of Contents/Revisions			
Approved: Michael Norman	Size C	Document Number SCH-27772 PDF-SPF-27772	Rev C
Date: Thursday, May 30, 2013		Sheet 1 of 5	

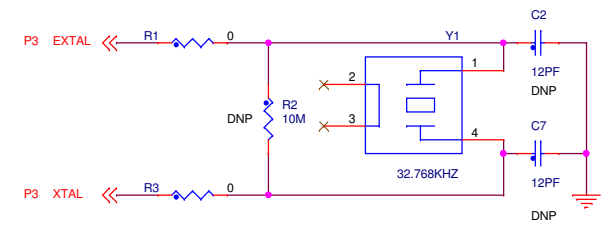
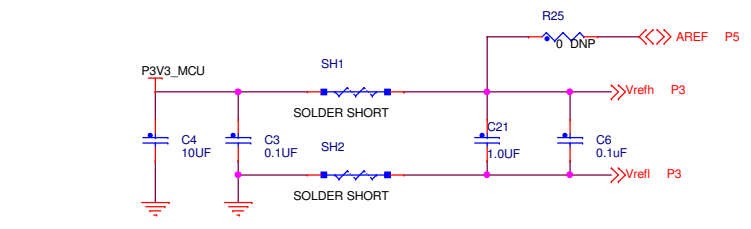
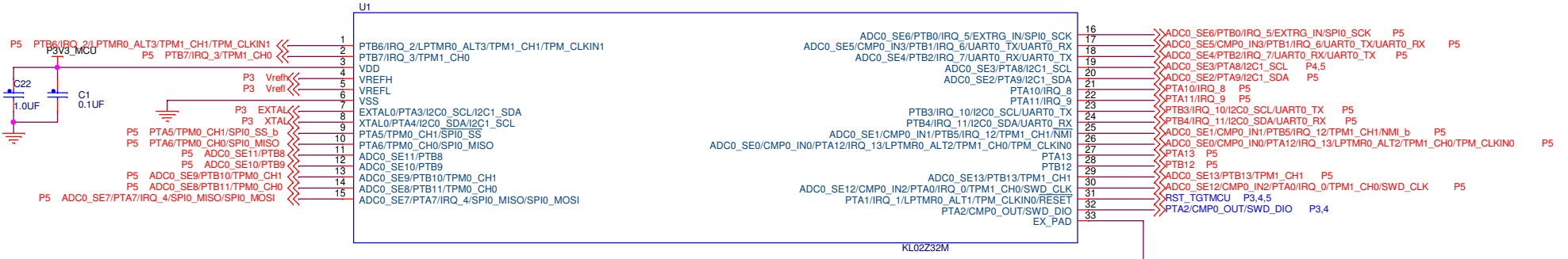
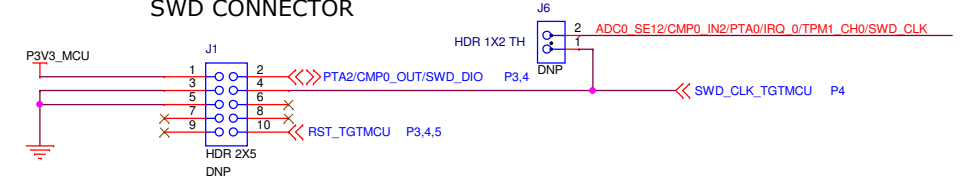


☐ - Indicates optional items that will **not** be populated by default



There is a bottom-trace shorting pin 1 to pin 2 of jumper

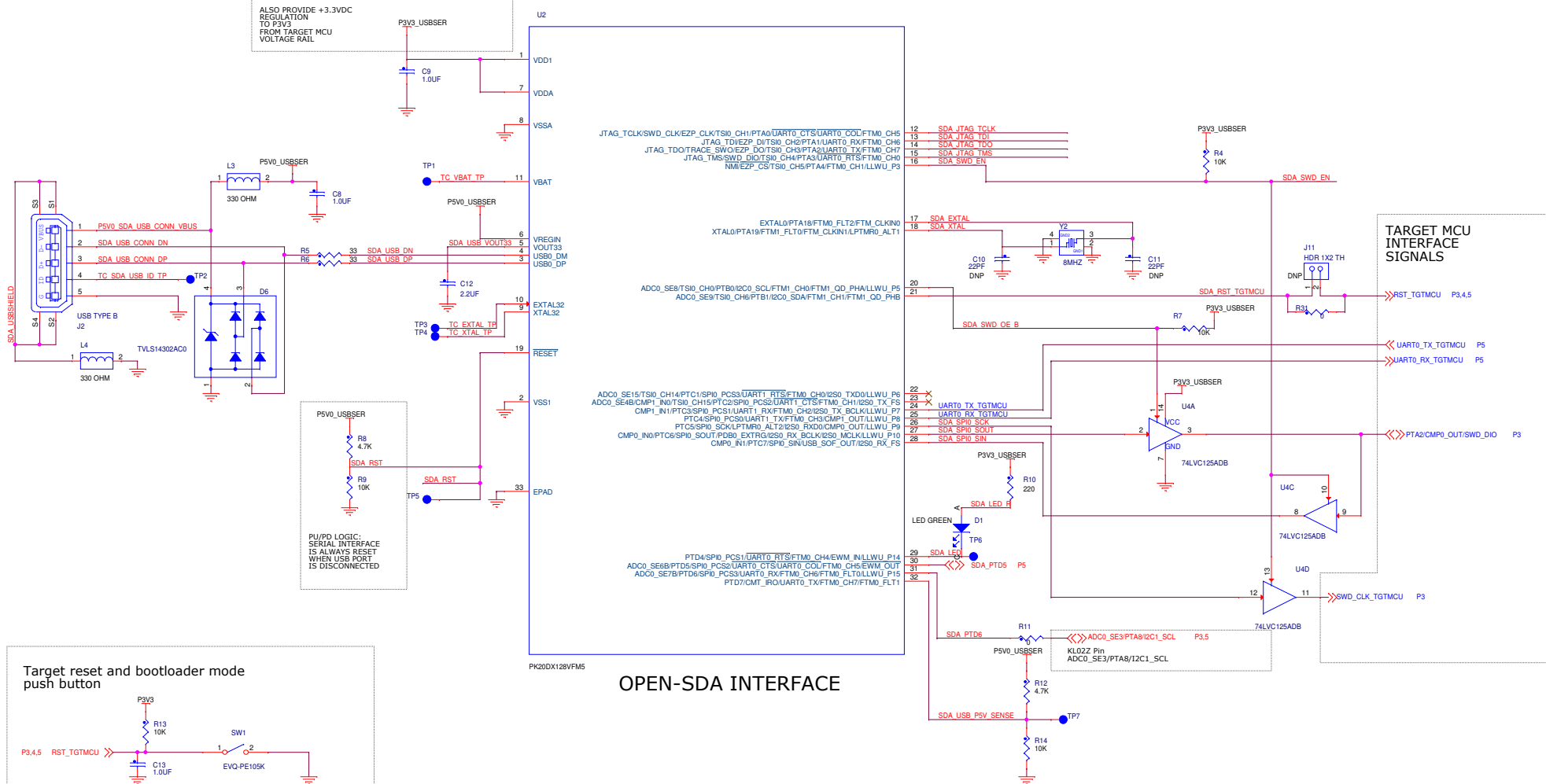
SWD CONNECTOR



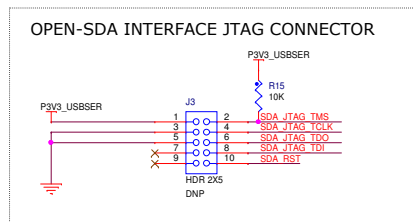
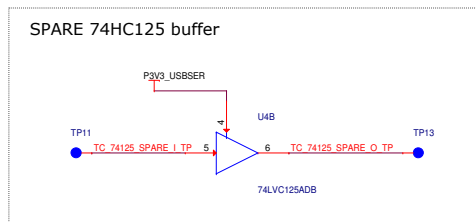
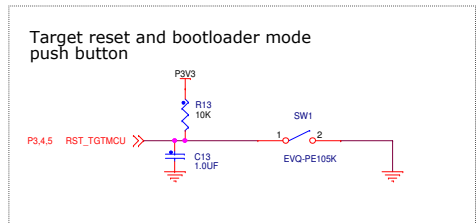
ICAP Classification: FCP: _____ FIUC: X PUBI: _____		
Drawing Title: FRDM-KL02Z		
Page Title: MCU		
Size B	Document Number SCH-27772 PDF:SPF-27772	Rev C
Date: Thursday, May 30, 2013	Sheet 3 of 5	



TO LEVERAGE OPENSDA INTERFACE IN YOUR DESIGN
 PLEASE PROVIDE +3.3VDC REGULATION TO P3V3_USBSER FROM P3V0_USBSER VOLTAGE RAIL
 ALSO PROVIDE +3.3VDC REGULATION TO P3V3 FROM TARGET MCU VOLTAGE RAIL



OPEN-SDA INTERFACE

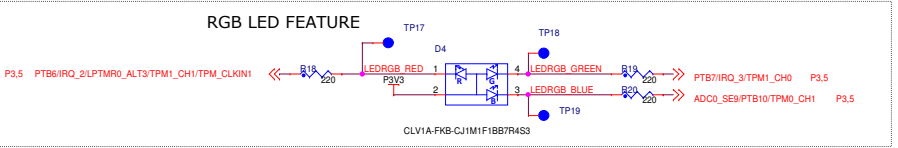
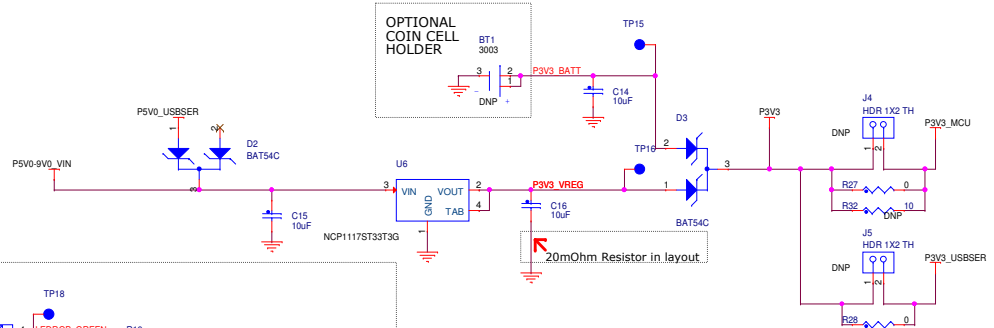
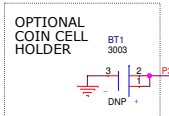


freescale
 semiconductor

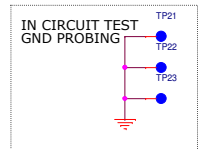
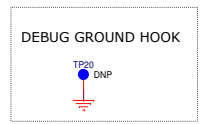
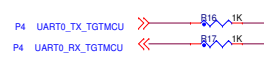
ICAP Classification: FCP: FIUC: PUBI: X
 Drawing Title: **FRDM-KL02Z**
 Page Title: **OPEN-SDA interface**

Size C	Document Number SCH-27772 PDF:SPF-27772	Rev C
--------	---	-------

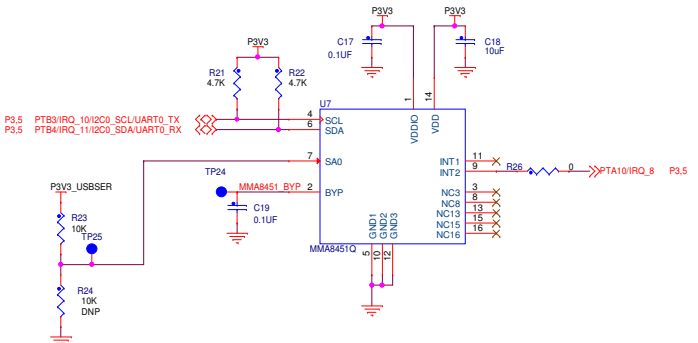
Date: Thursday, May 30, 2013 Sheet 4 of 5



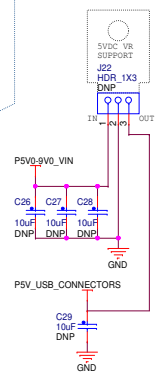
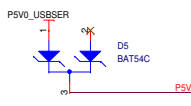
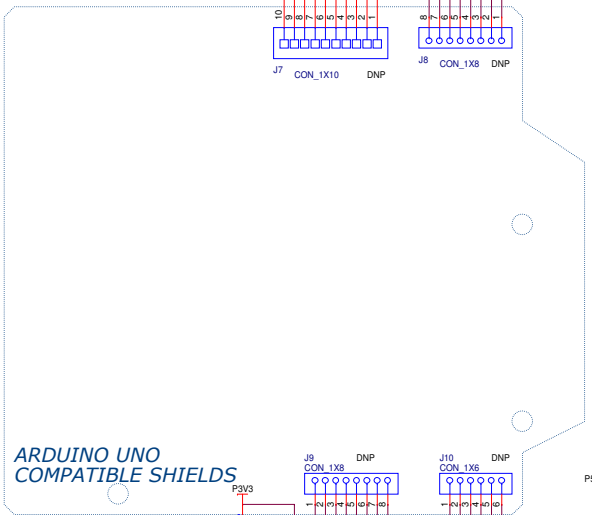
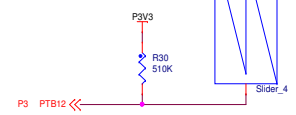
- P3 ADC0_SE4/PTB2/IRQ_7/UART0_RX/UART0_TX
- P3 ADC0_SE5/CMP0_IN3/PTB1/IRQ_6/UART0_TX/UART0_RX
- P3 PTAT1/IRQ_9
- P3 ADC0_SE1/CMP0_IN1/PTB5/IRQ_12/TPM1_CH1/NMI_5
- P3.5 PTAT10/IRQ_8
- P3 ADC0_SE0/CMP0_IN0/PTA12/IRQ_13/LPTMR0_ALT2/TPM1_CH0/TPM_CLKIN0
- P3.5 PTB6/IRQ_2/LPTMR0_ALT3/TPM1_CH1/TPM_CLKIN1
- P3.5 PTB7/IRQ_3/TPM1_CH0
- P3.5 PTB8/IRQ_2/LPTMR0_ALT3/TPM1_CH1/TPM_CLKIN1
- P3.5 PTB9/IRQ_1/TPM0_CH0
- P3.5 PTB10/TPM0_CH1
- P3 ADC0_SE8/PTB10/TPM0_CH1
- P3 PTAT5/TPM0_CH0/SPI0_MISO
- P3 PTAT5/TPM0_CH1/SPI0_SS_0
- P3 ADC0_SE7/PTA7/IRQ_4/SPI0_MISO/SPI0_MOSI
- P3 ADC0_SE8/PTB11/TPM0_CH0
- P3 PTAT5/TPM0_CH0/SPI0_MISO
- P3 ADC0_SE6/PTB0/IRQ_5/EXTREG_INV/SPI0_SCK
- P3.5 PTB4/IRQ_11/I2C0_SDA/UART0_RX
- P3.5 PTB3/IRQ_10/I2C0_SCL/UART0_TX



I2C INERTIAL SENSOR



TOUCH ELECTRODES



- P3.4 RST_TGTMCU
- P4_SDA_PT05
- P3_ADC0_SE11/PTB8
- P3_ADC0_SE10/PTB9
- P3_ADC0_SE13/PTB11/TPM1_CH1
- P3_ADC0_SE12/CMP0_IN2/PTA0/IRQ_0/TPM1_CH0/SWD_CLK
- P3_ADC0_SE2/PTA9/I2C1_SDA
- P3.4_ADC0_SE3/PTB12/I2C1_SCL

freescale
semiconductor

ICAP Classification: FCP: FIUC: PUB: X
Drawing Title: **FRDM-KL02Z**
Page Title: **Power and Peripherals**

Size C	Document Number	Rev C
	SCH-27772 PDF:SPF-27772	

Date: Thursday, May 30, 2013 Sheet 5 of 5