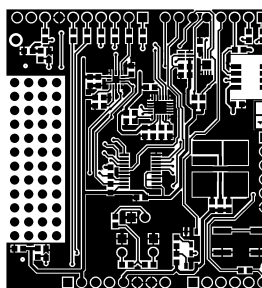
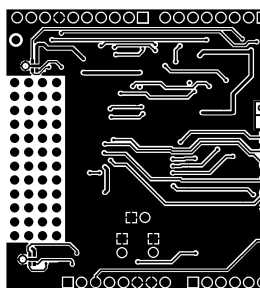
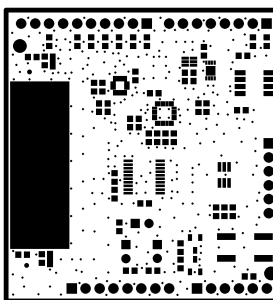


TOP LAYER

[illegible]

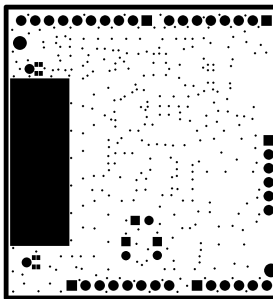
[illegible]



SOLDERMASK TOP

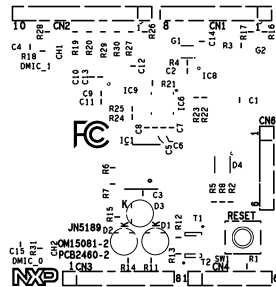


NO	TYPE	REV.	REV.DRAWN	CHANGES/REVISIONS	DATE	BY	TESTED	DATE
DESCRIPTION	DATE		TESTED/RECEIVED		DATE	APPROVED/APPROVED		DATE
TITLE		DATE		DATE		DATE		DATE
<p>TYPE JMS189 AUDIO/LIGHT/SENSORS EXPANSION BOARD</p> <p>TYPE JMS189 AUDIO/LIGHT/SENSORS EXPANSION BOARD</p>								
<p>NXP SEMICONDUCTORS</p> <p>2 Electronic Avenue Phillips Way, Dordrecht, The Netherlands</p>				<p>SOLDERMASK TOP</p> <p>ORDER NUMBER/DOCUMENT NUMBER</p>				
<p>PCB2460-2-312</p>				<p>REV. 00</p>				


SOLDERMASK BOT



No.	CHNL	INT.	Module	CHNL/CHNL/CHNL	DESC./JMBUS	DATE	TESTED/
SEVEN	1	1	1	1	1	1	1
ADDR-5			1	1	1	1	1
			1	1	1	1	1
TYPE	JMS189	AUDIO/LIGHT/SENSORS	EXPANSION BOARD				
TYPE	JMS189	AUDIO/LIGHT/SENSORS	EXPANSION BOARD				
							
2 Expanses And Phillips 2 Expanses And Phillips 2 Expanses And Phillips 2 Expanses And Phillips				2 Expanses And Phillips 2 Expanses And Phillips 2 Expanses And Phillips 2 Expanses And Phillips			
PCB2460-2				PCB2460-2			



NO.	TYPE	REV.	REV. DATE	SYMBOL	DESCRIPTION	REV.	REV. DATE	SYMBOL	DESCRIPTION
1	TYPE	JNS109		AUDIO/LIGHT/SENSORS	EXPANSION BOARD				
2	TYPE	JNS109		AUDIO/LIGHT/SENSORS	EXPANSION BOARD				



SEMI-CONDUCTORS

2 Eindhoven, The Netherlands

PO BOX - COLUMBIA

14090 CANN CREEK 9

SILKSCREEN TOP

MINOR REVISION/REWORK NUMBER

REV. PAGE

PCB2460-2-380 00 1



NXP