



UM11580

PCT2075DP-ARD evaluation board

Rev. 1.0 — 22 February 2021

User manual

Document information

Information	Content
Keywords	PCT2075DP, I ² C-bus, Fm+, Arduino port, EVK
Abstract	The PCT2075DP-ARD evaluation board is a daughter card equipped with an Arduino port, designated for easy test and design of PCT2075DP IC, I ² C-bus Fm+, 1 °C accuracy, digital temperature sensor and thermal watchdog. The board is fully compliant with MIMXRT1050-EVK, LPC55S69-EVK and 8MMINILPD4-EVK, including GUI software control. The board can be attached to any device equipped with an Arduino port.



Revision history

Rev	Date	Description
v.1.0	20210222	Initial version

Important Notice

NXP provides the enclosed product(s) under the following conditions:

This evaluation kit is intended for use of ENGINEERING DEVELOPMENT OR EVALUATION PURPOSES ONLY. It is provided as a sample IC pre-soldered to a printed circuit board to make it easier to access inputs, outputs, and supply terminals. This evaluation board may be used with any development system or other source of I/O signals by simply connecting it to the host MCU or computer board via off-the-shelf cables. This evaluation board is not a Reference Design and is not intended to represent a final design recommendation for any particular application. Final device in an application will be heavily dependent on proper printed circuit board layout and heat sinking design as well as attention to supply filtering, transient suppression, and I/O signal quality.

The goods provided may not be complete in terms of required design, marketing, and or manufacturing related protective considerations, including product safety measures typically found in the end product incorporating the goods. Due to the open construction of the product, it is the user's responsibility to take any and all appropriate precautions with regard to electrostatic discharge. In order to minimize risks associated with the customers applications, adequate design and operating safeguards must be provided by the customer to minimize inherent or procedural hazards. For any safety concerns, contact NXP sales and technical support services.

Should this evaluation kit not meet the specifications indicated in the kit, it may be returned within 30 days from the date of delivery and will be replaced by a new kit.

NXP reserves the right to make changes without further notice to any products herein. NXP makes no warranty, representation or guarantee regarding the suitability of its products for any particular purpose, nor does NXP assume any liability arising out of the application or use of any product or circuit, and specifically disclaims any and all liability, including without limitation consequential or incidental damages. Typical parameters can and do vary in different applications and actual performance may vary over time. All operating parameters, including Typical, must be validated for each customer application by customer's technical experts.

NXP does not convey any license under its patent rights nor the rights of others. NXP products are not designed, intended, or authorized for use as components in systems intended for surgical implant into the body, or other applications intended to support or sustain life, or for any other application in which the failure of the NXP product could create a situation where personal injury or death may occur.

Should the Buyer purchase or use NXP products for any such unintended or unauthorized application, the Buyer shall indemnify and hold NXP and its officers, employees, subsidiaries, affiliates, and distributors harmless against all claims, costs, damages, and expenses, and reasonable attorney fees arising out of, directly or indirectly, any claim of personal injury or death associated with such unintended or unauthorized use, even if such claim alleges NXP was negligent regarding the design or manufacture of the part.

1 Introduction

This document describes the PCT2075DP-ARD demo board. The evaluation board is built around the PCT2075DP IC and works as a daughter card which can be connected through an Arduino port to various Arduino compatible (including original Arduino Uno R3) boards. The board is intended to test and measure the characteristics of the PCT2075DP 1 °C accuracy digital temperature sensor and thermal watchdog, produced by NXP Semiconductors.

Additionally, the daughterboard has software support and a graphical user interface (Windows platform) for the following NXP evaluation boards: MIMXRT1050-EVK board LPC55S69-EVK development board, and 8MMINILPD4-EVK board

The host device communicates with the sensor through a bidirectional Fm+ I²C-bus. Among the device under test (DUT) IC, the board is equipped with an Arduino port and the necessary components for easy testing, shortening the time to make measurements and check operation of the PCT2075DP IC. A special feature of the evaluation board is the presence of a heating resistor, placed on the top of the DUT IC. The heating resistor is controlled with an NMOS transistor which acts as an ON/OFF circuit, allowing the user to slightly modify the temperature of the sensor. The GUI software is able to control the heating element and to monitor the temperature measured by the sensor.

2 Finding kit resources and information on the NXP web site

NXP Semiconductors provides online resources for this evaluation board and its supported device(s) on <http://www.nxp.com>.

The information page for PCT2075DP-ARD evaluation board is at <http://www.nxp.com/PCT2075DP-ARD>. The information page provides overview information, documentation, software and tools, parametrics, ordering information and a **Getting Started** tab. The **Getting Started** tab provides quick-reference information applicable to using the PCT2075DP-ARD evaluation board, including the downloadable assets referenced in this document.

2.1 Collaborate in the NXP community

The NXP community is for sharing ideas and tips, ask and answer technical questions, and receive input on just about any embedded design topic.

The NXP community is at <http://community.nxp.com>.

3 Getting ready

Working with the PCT2075DP-ARD requires the kit contents, additional hardware, and a Windows PC workstation with installed software.

3.1 Kit contents

- Assembled and tested evaluation board in an anti-static bag.
- Quick Start Guide

3.2 Assumptions

Familiarity with the I²C-bus is helpful but not required.

3.3 Static handling requirements

CAUTION



This device is sensitive to ElectroStatic Discharge (ESD). Therefore care should be taken during transport and handling. You must use a ground strap or touch the PC case or other grounded source before unpacking or handling the hardware.

Note: This product has not undergone formal EU EMC assessment. As a component used in a research environment, it will be the responsibility of the user to ensure the finished assembly does not cause undue interference when used and cannot be CE marked unless assessed.

3.4 Minimum system requirements

This evaluation board requires a Windows PC workstation. Meeting these minimum specifications should produce great results when working with this evaluation board.

- Computer with Windows 10
- One USB port (either 3.0, 2.0 or 1.1 compatible)
- One of three EVK boards (MIMXRT1050-EVK, LPC55S69-EVK, 8MMINILPD4-EVK) along with the associated firmware / GUI software
- USB cable for power and data connection between PC and EVK board (if not included in the EVK package)

4 Getting to know the hardware

4.1 PCT2075DP-ARD features

- Connector for external access to I²C-bus
- On-board heating resistor with ON/OFF control circuit
- On-board LED for overtemperature signaling
- Equipped with Arduino Uno R3 port for direct connection with Arduino devices
- Fully compliant with MIMXRT1050-EVK board, including GUI (Windows 10)
- Fully compliant with LPC55S69-EVK board, including GUI (Windows 10)
- Compliant with 8MMINILPD4-EVK board, including GUI (Windows 10)

Note:

For 8MMINILPD4-EVK board it is necessary to use IMX8MMINI-IARD interposer board between the EVK and PCT2075DP-ARD daughterboard (see IMX8MMINI-IARD User Manual).

4.2 Kit featured components

The board was developed around the PCT2075DP DUT IC (U1). The board also features an Arduino interface (J1, J4 to J6), which powers the circuit and communicates between the controller and DUT IC through an I²C-bus, with a maximum speed of 1 MHz. The

I²C-bus is linked to the dedicated pins of the Arduino connector (J1) and to on-board connector (J2), allowing the user to access the I²C-bus externally. For more details about I²C description and bus transactions, see PCT2075 datasheet.

The Overtemp Shutdown (OS) output of PCT2075DP IC (pin 3) is connected to J5, pin 3 through 0 Ω resistor R6. An on-board LED (D2) can be connected through J3 jumper to TMP_OS line for monitoring purposes. The output (pin 3 of the IC) is open-drain, therefore a pull-up resistor (R17) is needed to assure correct polarization of the internal MOS transistor. The IC has a 3-bit address input, allowing a total of 27 distinct addresses. For more details regarding the address setting, see PCT2075DP datasheet (NXP Semiconductors). The jumpers J7 to J9 located on the development board allow the user to set any address specified in the datasheet.

The resistor R19 (68 Ω / 600 mW) is placed over the sensor (DUT IC), and acts as a heating element. When the heating is ON the temperature of the sensor increases, so that the user can test and measure the temperature variation of the DUT IC. The heating resistor is driven by the NMOS transistor Q1, which works as an ON/OFF switch. The transistor state is controlled from the Arduino connector J5, pin 4 (the “NMOS_CTRL” line shown in).

The board is powered through the Arduino connector J6 (pin 4 – 3.3 V, pin 5 – 5 V, pin 6, 7 – GND). The 3.3 V rail voltage supplies the sensor circuit, while the 5 V power line is used for the heating resistor circuit.

4.2.1 Board layout and component placement

Figure 1 represents the top silkscreen of the board. The connectors of the Arduino port (J1, J4 to J6) are located on the bottom.

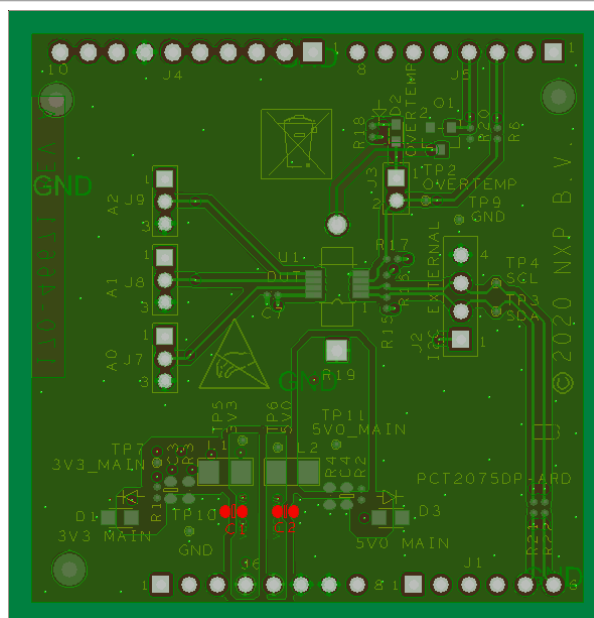


Figure 1. PCT2075DP-ARD board layout (top view)

See Figure 2 and Figure 3 for top and bottom view of the PCT2075DP-ARD daughter card.

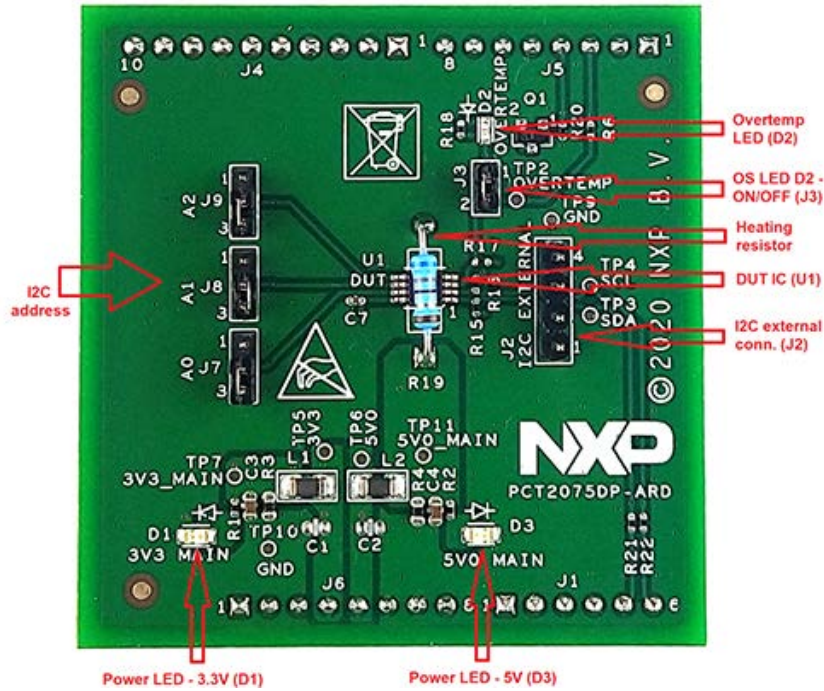


Figure 2. PCT2075DP-ARD board, top view

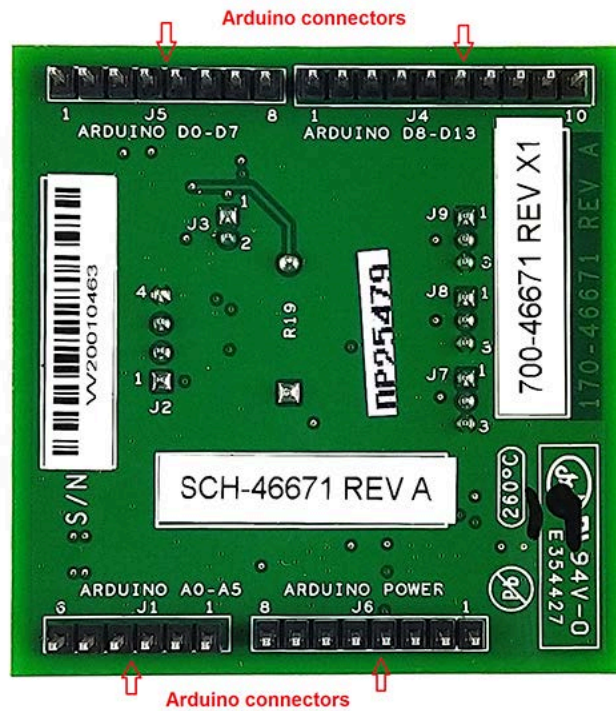


Figure 3. PCT2075DP-ARD board, bottom view

4.2.2 Arduino port

J1, J4, J5, and J6 are the mated pin headers of Arduino Uno R3 connectors, having the same electrical function and placed on the board, so that the daughterboard can be directly inserted in the Arduino port. The daughterboard circuit uses only four signal lines. See [Table 1](#) for the connector pin chart, and the lines used in the circuit.

Table 1. Pin chart of Arduino connectors and their usage

Ref des	#	Arduino label	PCT2075DP-ARD function
J6 (Power)	1	NC	Not used
	2	IOREF	Not used
	3	RESET	Not used
	4	3.3V	Power supply
	5	5V	Not used
	6	GND	Power supply return
	7	GND	Power supply return
	8	Vin	Not used
J1 (analog, digital, I²C)	1	A0	Not used
	2	A1	Not used
	3	A2	Not used
	4	A3	Not used
	5	A4 / SDA ^[1]	Used as I ² C – SDA (I ² C_SDA)
	6	A5 / SCL ^[1]	Used as I ² C – SCL (I ² C_SCL)
J5 (digital, UART, PWM)	1	D0 / RX	Not used
	2	D1 / TX	Not used
	3	D2	Overtemp Shutdown Output (OS)
	4	D3 / PWM	Heater ON/OFF (NMOS_CNTRL)
	5	D4	Not used
	6	D5 / PWM	Not used
	7	D6 / PWM	Not used
	8	D7	Not used
J4 (mixed)	1	D8	Not used
	2	D9 / PWM	Not used
	3	D10 / SS / PWM	Not used
	4	D11 / MOSI / PWM	Not used
	5	D12 / MISO	Not used
	6	D13 / SCK	Not used
	7	GND	Power supply return
	8	AREF	Not used
	9	A4 / SDA ^[1]	Not used
	10	A5 / SCL ^[1]	Not used

[1] A4 / SDA common line for J2 – 5 and J4 – 9. A5 / SCL common line for J2 – 6 and J4 – 10.

4.3 Schematic, board layout and bill of materials

The schematic, board layout and bill of materials for the PCT2075DP-ARD evaluation board are available at <http://www.nxp.com/PCT2075DP-ARD>

5 Installing and configuring software and tools

PCT2075DP-ARD evaluation board is designed and built as a daughterboard able to work in conjunction with a motherboard equipped with an Arduino port. The board built to be fully compatible with the following NXP evaluation boards:

- MIMXRT1050-EVK
- LPC55S69-EVK
- 8MMINILPD4-EVK

The required firmware for the EVK boards is available for download at www.nxp.com. Before starting EVK – PCT2075DP-ARD, the EVK motherboard must be programmed with the corresponding firmware package. Additionally, a GUI application (Windows 10) is available for download from the same NXP site, allowing rapid testing and operation of PCT2075DP-ARD daughterboard through the mentioned EVK.

The GUI application is common for all three EVKs. For details regarding installation of the EVK firmware and GUI host software, see [UM11581, Arduino shields GUI and firmware installation manual](#).

Once the software is installed, the first step is to select the correct combination of EVK/daughterboard from the GUI, and then the board can be controlled from the GUI interface. See [Section 6 "Configuring the hardware"](#) and [Section 7 "GUI description"](#) for more details.

6 Configuring the hardware

6.1 Using PCT2075DP-ARD with MIMXRT1050-EVK board

[Figure 4](#) shows the required hardware for operation of the PCT2075DP-ARD daughterboard with MIMXRT1050-EVK.

- One MIMXRT1050-EVK board
- One PCT2075DP-ARD daughterboard
- One USB-A / USB Micro-B cable
- PC with Windows 10 operating system

The MIMXRT1050-EVK motherboard can be powered through three different connectors: using an external 5.0 V DC power supply, connected to J2 barrel power connector, directly from an USB port through J9 USB Micro-B connector (J9), or from the same USB port through J28 connector. J28 can be used as a debug connector, therefore using J28, through the same USB cable, the EVK can be powered and in the same time linked to PC for data exchange. The older USB ports (from PC) are not able to deliver the necessary current (500 mA), before establishing the communication, use an external power supply (connected to J2). From J1 (see [Figure 4](#)) the user can select the power configuration for the motherboard. For further details, see [i.MX RT1050 Evaluation Kit](#).

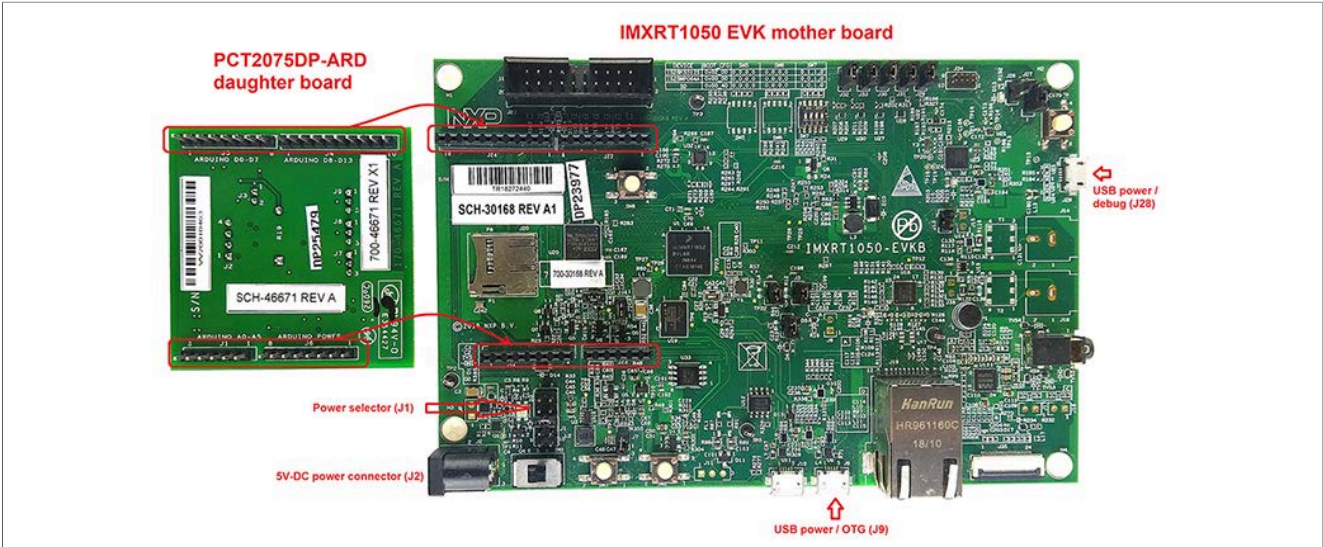


Figure 4. PCT2075DP-ARD daughterboard and IMXRT1050 EVK board, before starting

To configure the hardware and workstation, complete the following procedure:

1. Configure the suitable power configuration of EVK (J1). If using J28 for power supply, the J1 jumper shall be placed in position 5-6. If using an external power supply (connected to J2), the jumper J1 will be placed in position 1-2
2. Insert the PCT2075DP-ARD daughter card on the Arduino port of the EVK (see [Figure 4](#))
3. Connect the EVK board using J28 connector to USB port of the computer
4. Install the IMXRT1050 target firmware (download from NXP site and see [UM11581, Arduino shields GUI and firmware installation manual](#) for step-by-step instructions)
5. Install GUI application (see [UM11581, Arduino shields GUI and firmware installation manual](#))
6. Open the GUI application to operate the device from the PC. For details regarding GUI operation see [Section 7 "GUI description"](#).

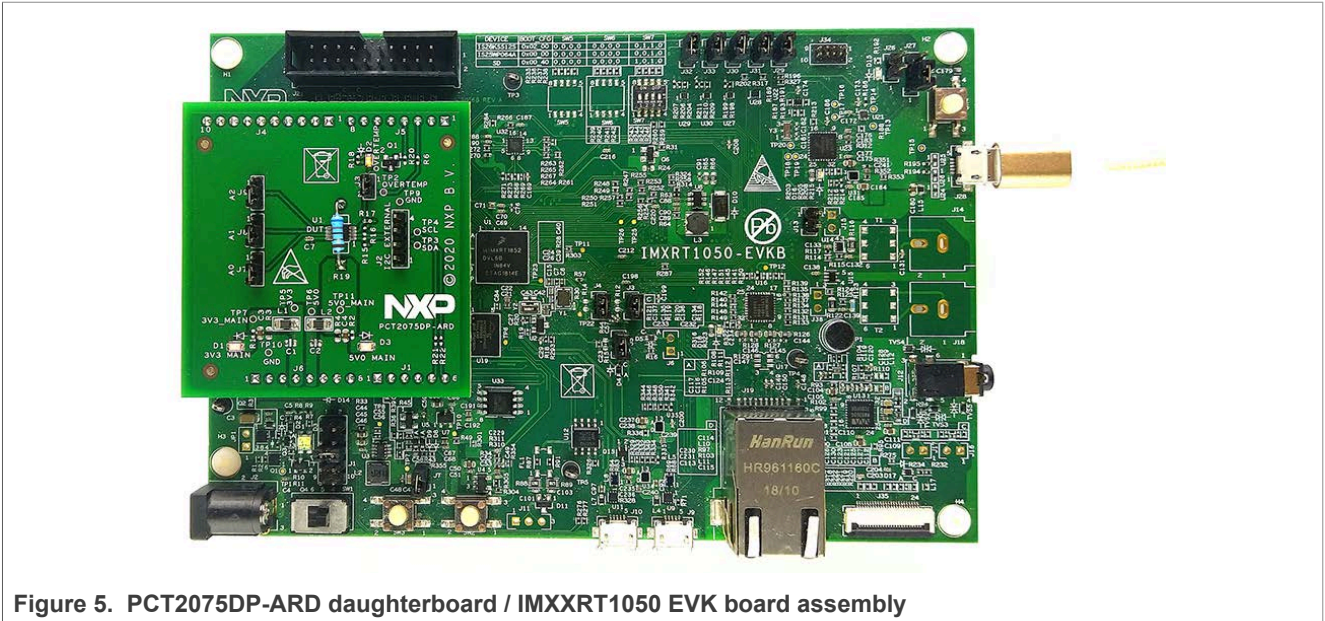


Figure 5. PCT2075DP-ARD daughterboard / IMXXRT1050 EVK board assembly

6.2 Using PCT2075DP-ARD with LPC55S69-EVK board

Figure 6 shows the required hardware for operation of the PCT2075DP-ARD and LPC55S69-EVK board.

- One LPC55S69-EVK board
- One PCT2075DP-ARD daughterboard
- One USB-A / USB Micro-B cable
- PC with Windows 10 operating system

The LPC55S69-EVK development board is equipped with four USB Micro-B connectors: P5, P6, P9 and P10. The board can be powered through any USB port. Using P6 USB connector to connect the board to the PC, the bring-up operation is simplified because P6 is designated for debug and the USB cable will accomplish two tasks in the same time: powering the board, and data link between the EVK board and PC. For more details, see [LPCpresso55S69 Development Board](#).

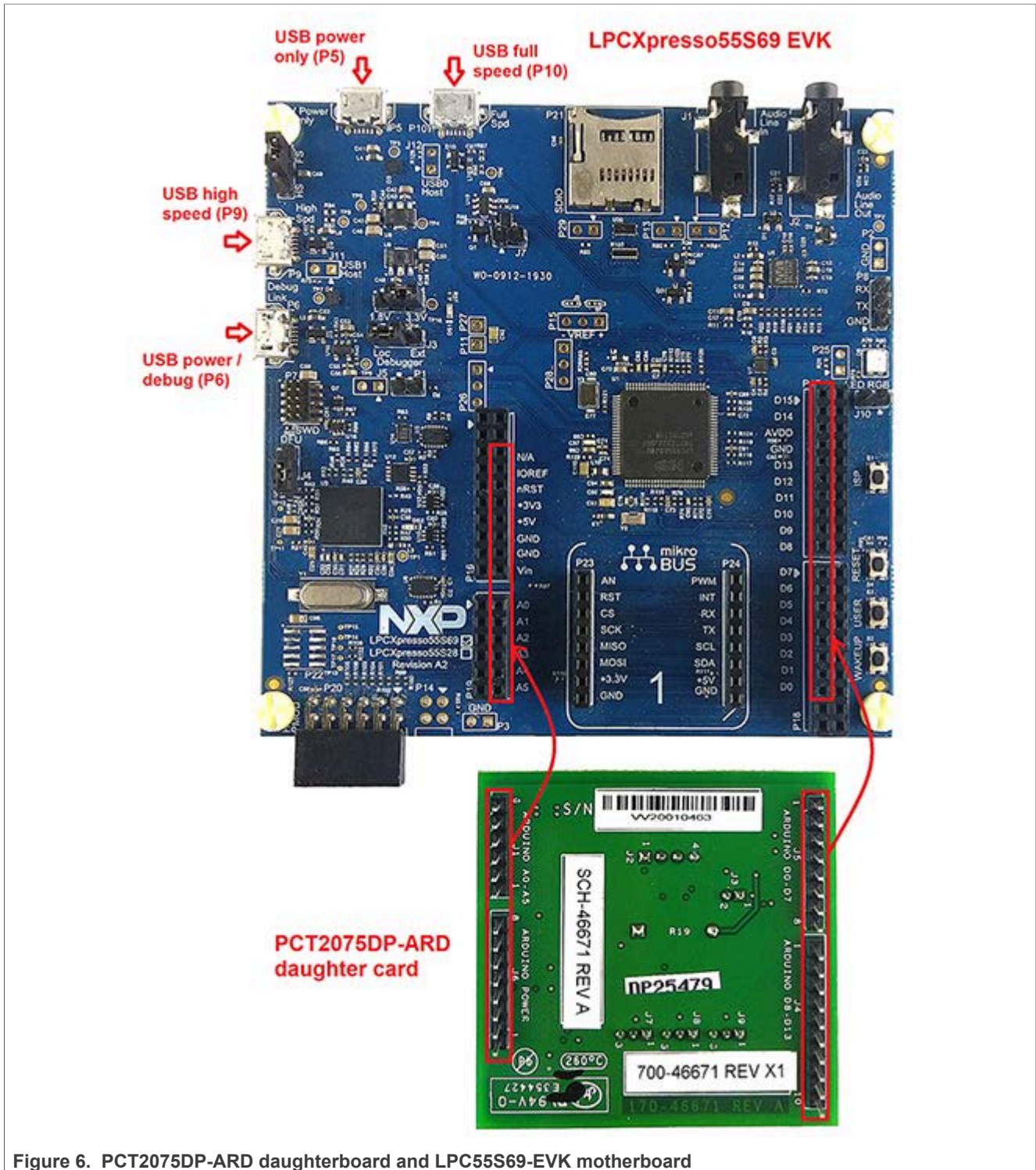


Figure 6. PCT2075DP-ARD daughterboard and LPC55S69-EVK motherboard

To configure the hardware and workstation, complete the following procedure:

1. Insert the PCT2075DP-ARD daughter card to P16 – P19 connectors located on LPC55S69-EVK development board (see the marked pins of P16 – P19, [Figure 6](#))
2. Connect the development board using port P6 USB port of PC

3. Install the LPC55S69-EVK target firmware (download from NXP site and see [UM11581, Arduino shields GUI and firmware installation manual](#) for step-by-step instructions)
4. Install GUI application on PC (see [UM11581, Arduino shields GUI and firmware installation manual](#))
5. Open the GUI application to operate the device from the PC. For details regarding GUI operation see [Section 7](#)

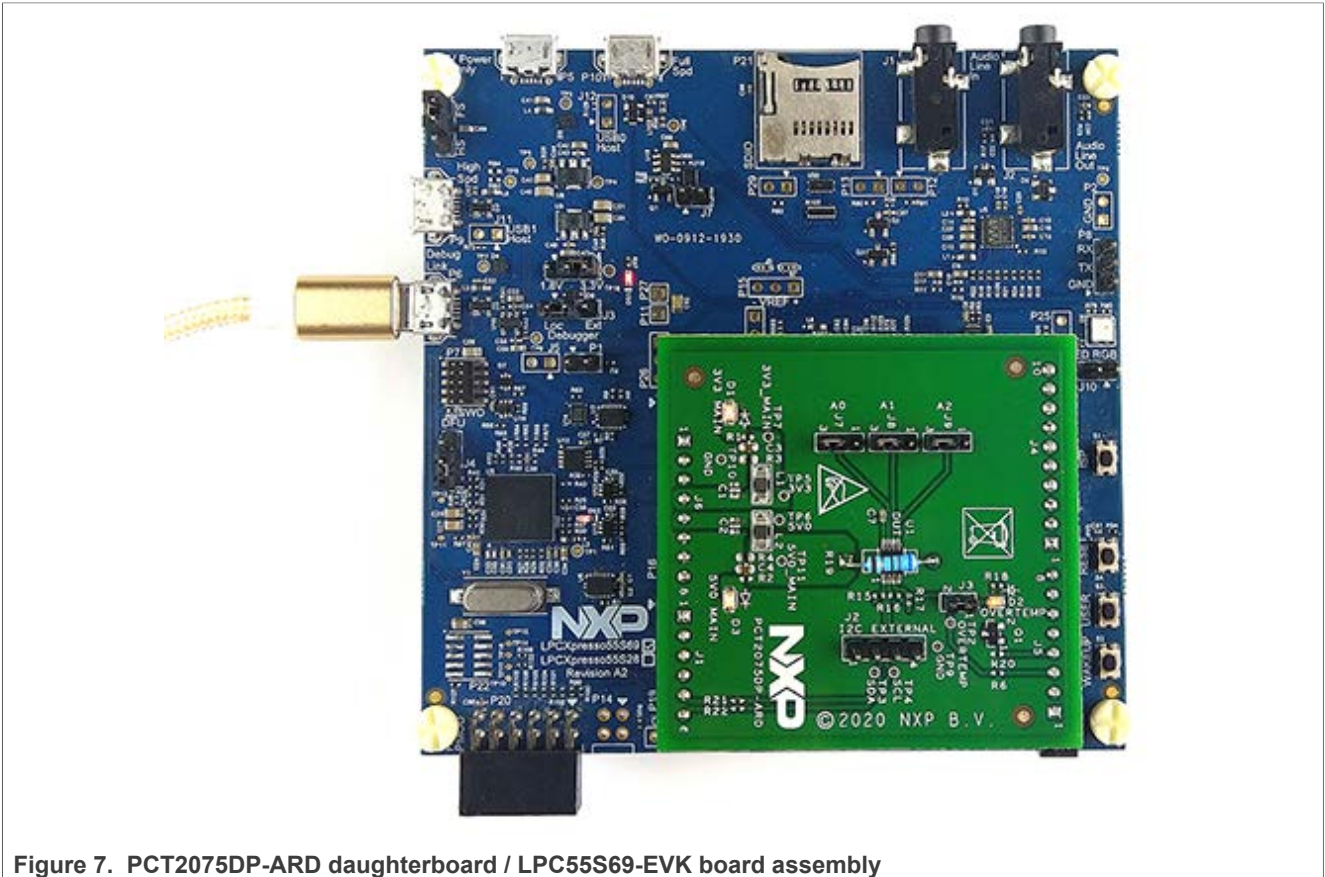


Figure 7. PCT2075DP-ARD daughterboard / LPC55S69-EVK board assembly

6.3 Using PCT2075DP-ARD with 8MMINILPD4-EVK board

If 8MMINILPD4-EVK board is used for PCT2075DP-ARD operation, a third board (IMX8MMINI-IARD interposer board) must be used, especially designed and built as EVK – daughterboard interconnection. The 8MMINILPD4-EVK is not equipped with an Arduino port; instead it has a 2x20 pin expansion connector (J1003, see 8MMINILPD4-EVK user manual). J1003 is a multipurpose port, containing different digital I/O lines, including specialized I²C and SPI buses. Starting from the expansion connector pin chart, an Arduino port interposer board was developed.

[Figure 8](#) shows, along with the EVK and daughterboard, a third board is included in the setup assembly. To power-up and operate the setup, it is also necessary to have one USB-C cable for power (see [Figure 9](#)), connected to Port 2 of the EVK board. The board is equipped with a power switch (SW101) which is positioned in ON position to power-up the setup. Data communication is assured through a second (USB Micro-B) cable connected to PC and debug port of the EVK (J901).

To attach the daughterboard to the EVK, it is necessary to use the IMX8MMINI-IARD interposer boards by plugging PCT2075DP-ARD to the Arduino connector of the interposer, and then the interposer to expansion connector (J1003), located on the i.MX8MMINI EVK board (see [Figure 8](#)). The user may find more details regarding power-up and operation of the setup assembly in 8MMINI-LPD4-EVK user manual and IMX8MMINI-IARD User Manual. The files can be downloaded from www.nxp.com/.

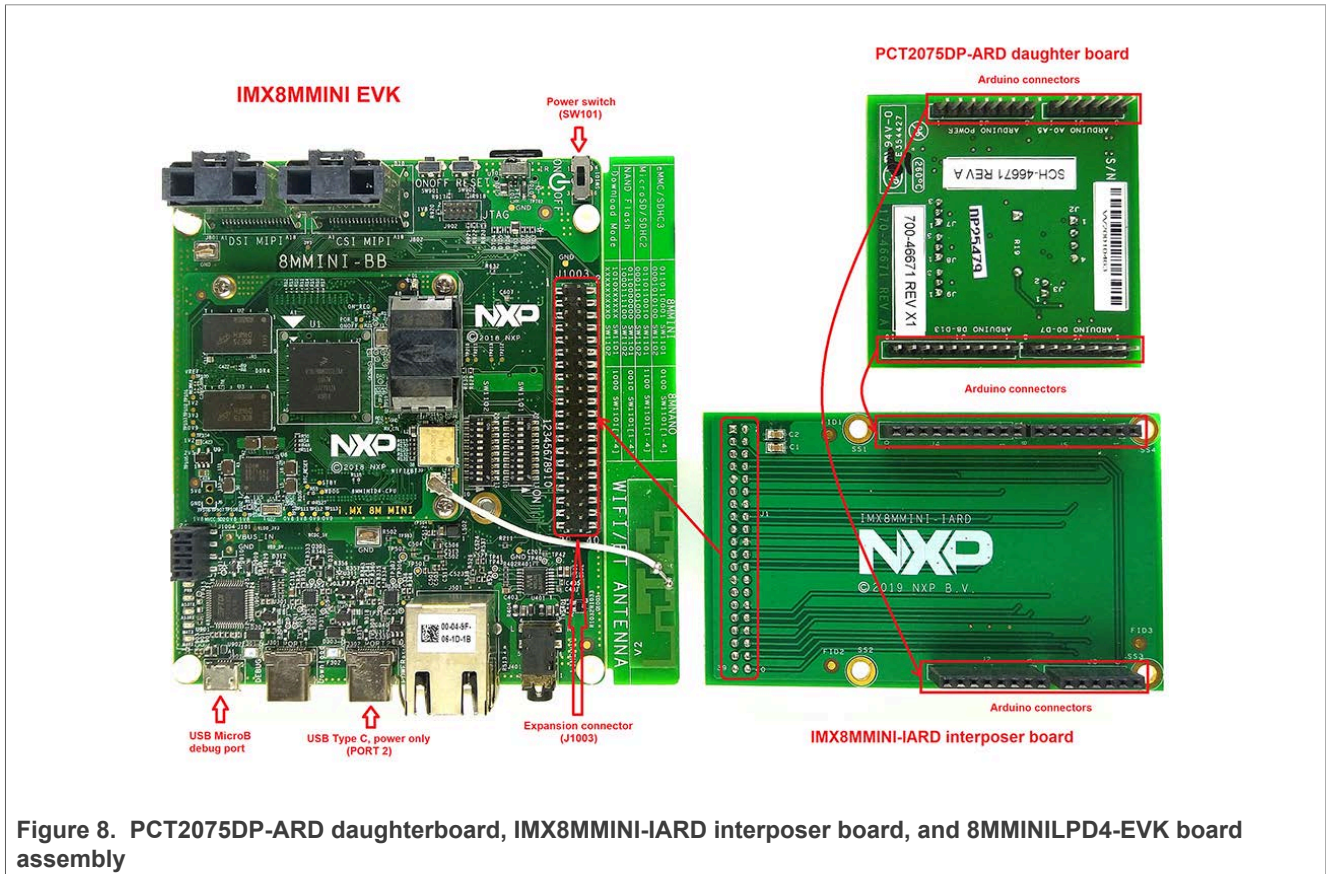


Figure 8. PCT2075DP-ARD daughterboard, IMX8MMINI-IARD interposer board, and 8MMINI-LPD4-EVK board assembly

To configure the hardware and workstation, complete the following procedure:

1. Insert the PCT2075DP-ARD on IMX8MMINI-IARD interposer board Arduino connectors (located on the top side).
2. Attach the obtained assembly to EVK (plug J1 connector of IMX8MMINI-IARD, located on the bottom side into J1003 expansion board located on the top side of 8MMINI-LPD4-EVK board).
3. Power-up the EVK board using a USB Type-C cable attached to Port 2.
4. Connect the EVK to the PC, using a USB Micro-B cable, attached to J901 debug port.
5. Place SW101 in ON position to power-up the boards.
6. Install the MIMXRT1050 target firmware (download from NXP site and see [UM11581](#) for step-by-instructions).
7. Install GUI application on PC (see the same instruction file).
8. Open the GUI application to operate the device from the PC. For details regarding GUI operation see [Section 7](#).

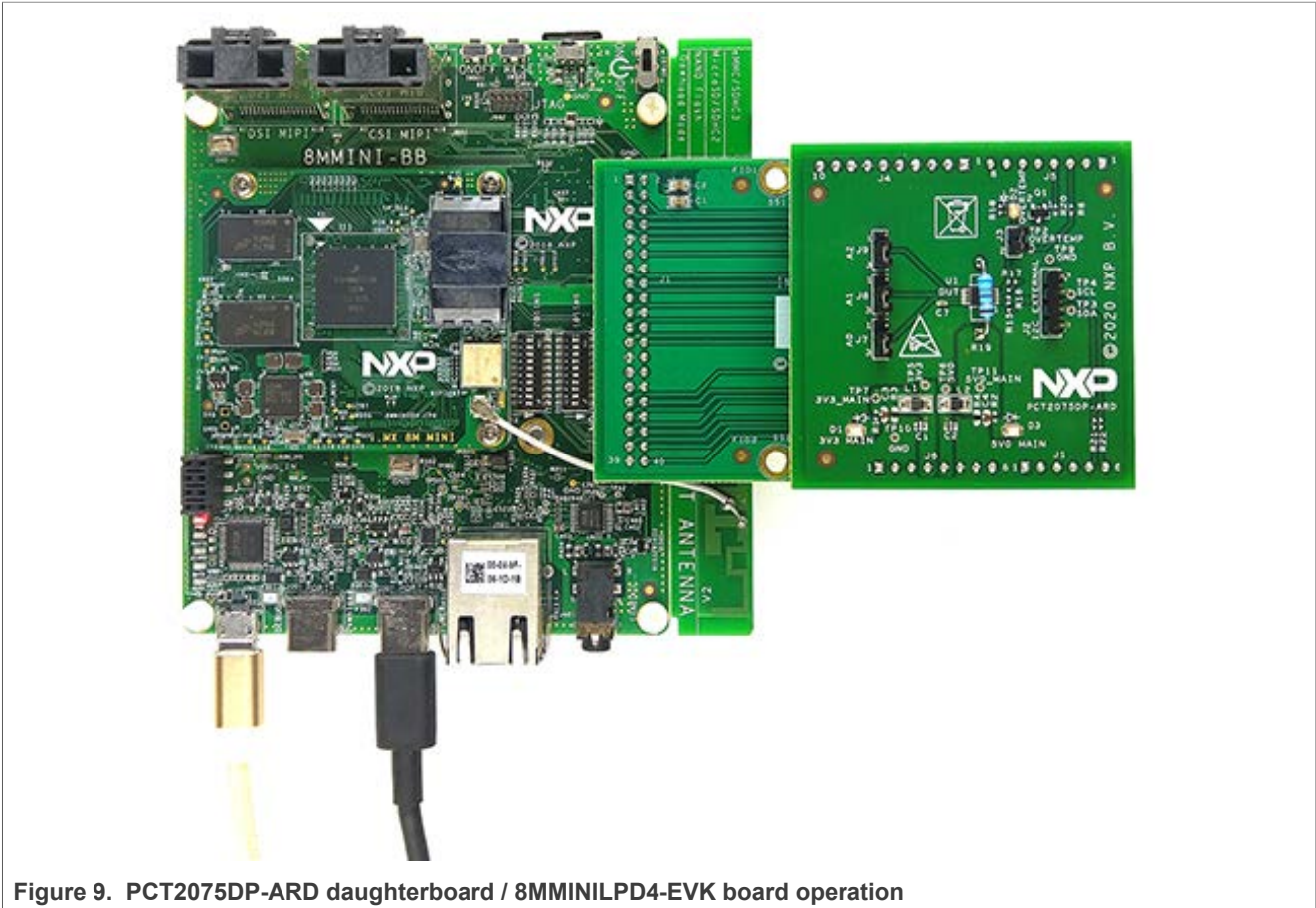


Figure 9. PCT2075DP-ARD daughterboard / 8MMINILPD4-EVK board operation

6.4 Using PCT2075DP-ARD with another Arduino device

The PCT2075DP-ARD daughterboard can be operated with different EVK boards with an Arduino port. There are two options to connect the board: using other EVK equipped with an Arduino port, and an EVK without Arduino port.

In the first case, a firmware is developed according to PCT2075 specifications, and then the PCT2075DP-ARD daughterboard is attached to the EVK to operate the board.

In the second case, using the pin chart of Arduino connectors ([Table 1](#)), make the necessary electrical connections (for power, I²C-bus and control lines), and develop the desired firmware compliant with IC specifications. Use PCT2075 datasheet to read details about internal registers of PCT2075 and data exchange between internal controller and the EVK. Ensure that the electrical connections are accurate and avoid data conflicts on the signal lines in order to prevent IC damage.

7 GUI description

A GUI application is available for the three EVK boards from NXP Semiconductors. The application is common for all EVKs / development boards.

This section describes the GUI application and how the user can control the PCT2075DP-ARD daughterboard from the graphical interface. First, install the GUI package and software on the PC (Windows 10). For more details, see [UM11581](#).

Once installation is complete, assure that one of the three EVKs with attached PCT2075DP-ARD daughterboard is connected to PC and powered-on. Open NXP_GUI (PCT2075) GUI application.

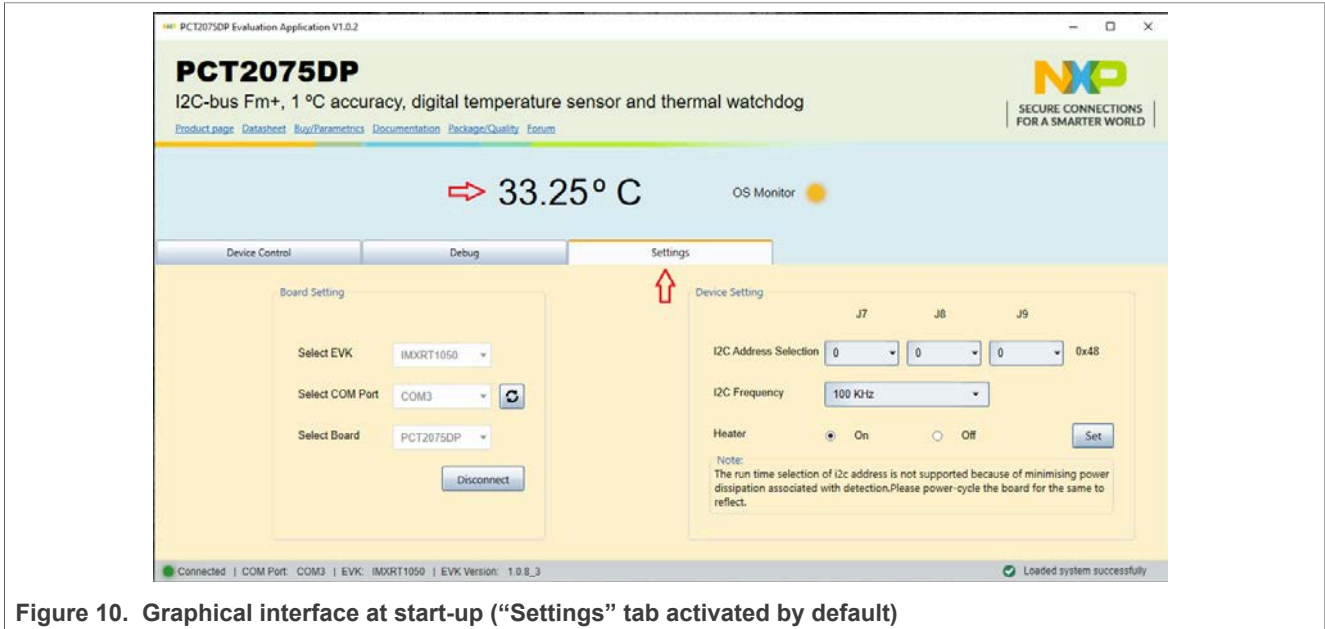


Figure 10. Graphical interface at start-up (“Settings” tab activated by default)

The GUI application starts with **Settings** tab (marked with red arrow). The left side of the window displays **Board setting**.

- **Select EVK:** displays list of EVKs. Selecting a wrong EVK board causes the connection to fail and a pop-up window with the message: *“Unable to Connect with EVK”* appears on the screen.
- **Select COM Port:** displays port selected for the communication. The port is automatically selected by the system (COM 3).
- **Select Board:** allows the user to select the correct daughter board (the application can support three different boards). In [Figure 10](#), the selected board is PCT2075.

The next tab is redundant, since the GUI application is addressing to PCT2075DP IC only, therefore there is nothing to select here. Before clicking on the **Connect** button, assure correct configuration of the J7, J8, and J9, from the **I2C Address Selection** (in the right side of the window, **Device Setting** section). J7, J8 and J9 are the reference designators of the address jumpers, located on the PCT2075DP-ARD daughterboard.

The user sets the tabs in the GUI according to the physical position of the on-board address jumpers, otherwise the communication through the I²C-bus fails. Choosing a different address than was set on the PCT2075DP-ARD daughterboard, when **Connect** button is activated a pop-up window with the message: *“Unable to Connect with Daughter Card”* appears on the screen. Assuming the correct parameters are chosen, clicking the **Connect** button establishes connection with the EVK.

In the bottom side of the GUI window a status bar shows in real time the status regarding connection between PC and the EVK. On the left side of the window is **Device Setting** section. The upper tab in this section is **I2C Address Selection**. The next tab allows the user to select the speed of I²C-bus (standard – 100 kHz, Fm - 400 kHz, or Fm+ - 1 MHz). Clicking on the **I2C Frequency** tab, a drop-down list allows the user to select the desired speed. The last tab is **Heater**. From this tab, the user can activate or deactivate the heater circuit (explained in [Hardware description](#)). The communication speed and

heater status is sent to the daughterboard when **Set** button (located on the right / bottom side of the section) is clicked. After the connection is established, the current value of temperature measured by the sensor is displayed in the upper blue region (marked with the red arrow).

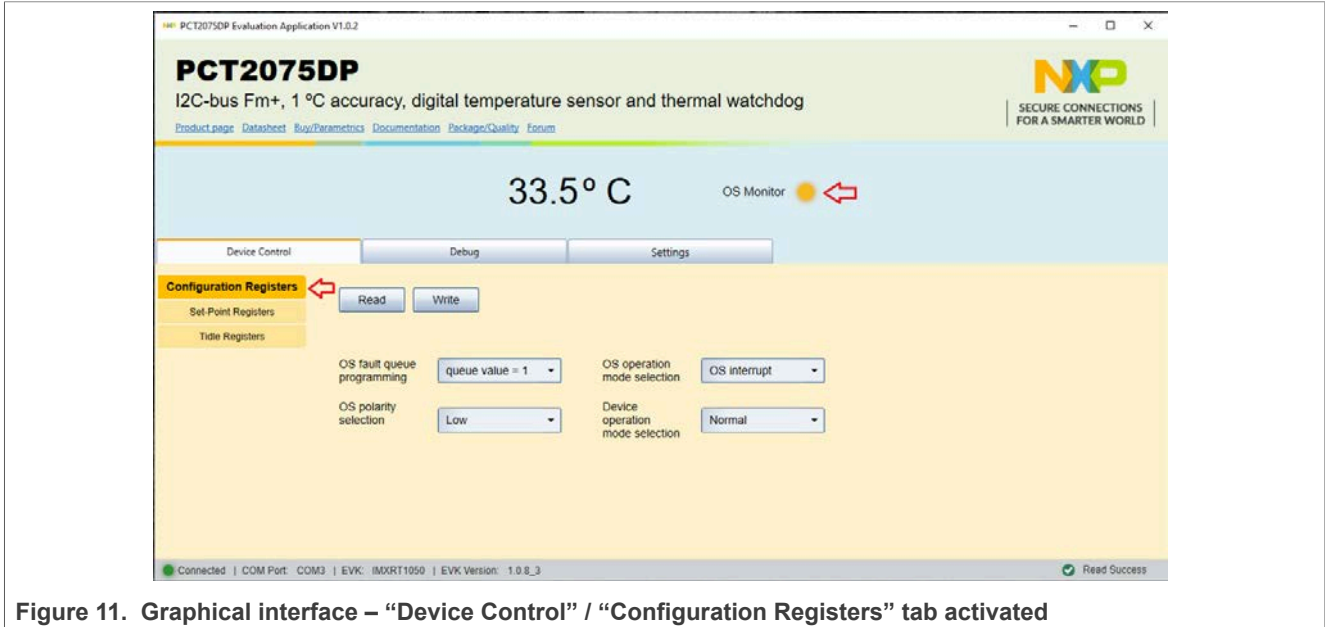


Figure 11. Graphical interface – “Device Control” / “Configuration Registers” tab activated

After clicking on **Device Control** tab, a new window appears in [Figure 11](#). On the left side of the window, three secondary tabs are displayed: the upper one activated by default, **Configuration Registers**. The registers displayed in this window refer to a group of settings regarding the configuration of Overtemp Shutdown output (pin 3 of the DUT IC). For more details regarding this feature, see [Hardware description](#) and PCT2075 datasheet.

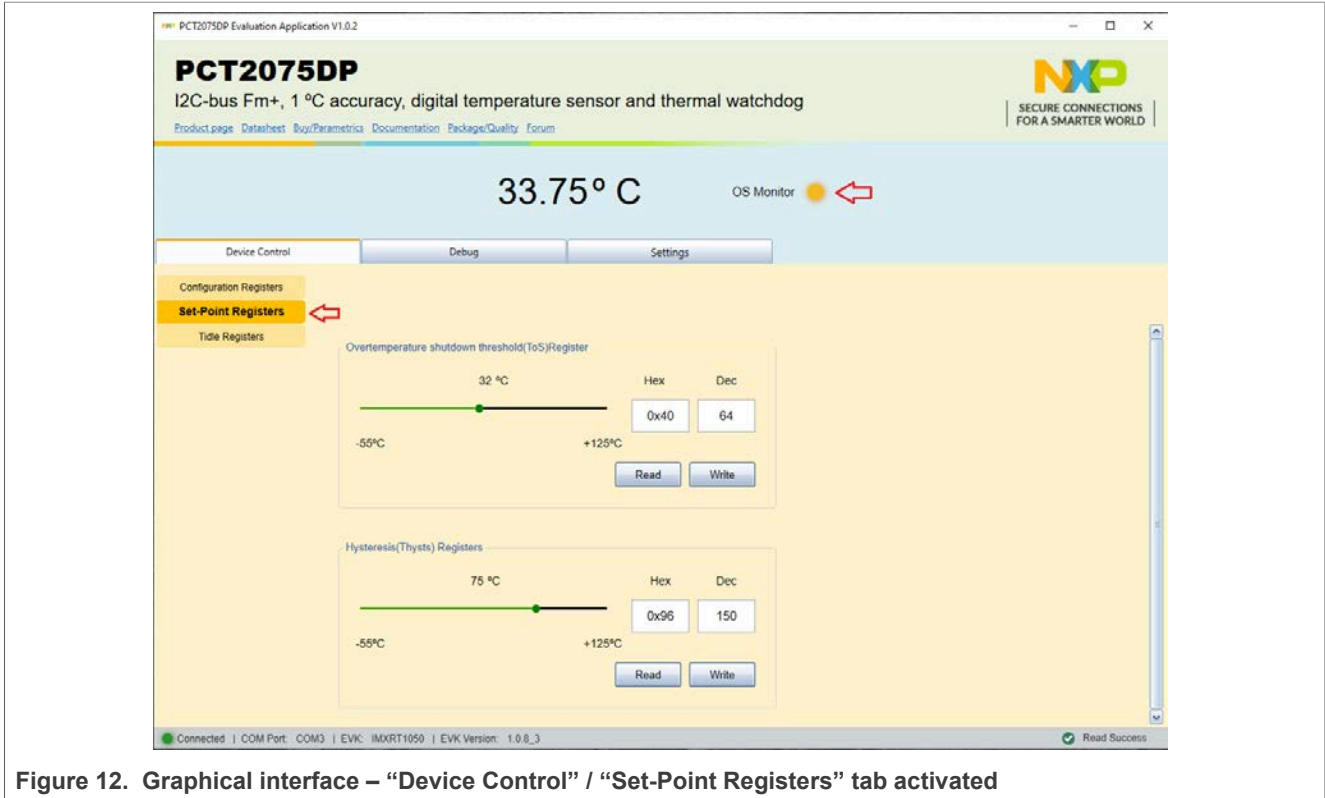


Figure 12. Graphical interface – “Device Control” / “Set-Point Registers” tab activated

The next secondary tab under the root tab **Device Control** is **Set-Point Registers**. From here, the user adjusts the Overtemperature shutdown threshold (Tos) and hysteresis (Thyst) parameters. The data to be read in the corresponding registers is introduced by dragging the graphical sliders, or by introducing the Hex or Dec values directly from the keyboard. The **Write** buttons set the register in the DUT IC, and the **Read** buttons allow the user to bring back the data from the internal registers of the IC to GUI. More details regarding Tos and Thyst are detailed in the PCT2075 datasheet. [Figure 12](#) shows the **Device Control / Set-Point Registers** window. In the upper blue region, left side (and marked with the red arrow) the OS indicator shows the logic level of Overtemp Shutdown (OS) output of the DUT IC. The indicator replicates the status of the on-board LED (D2) located on PCT2075DP-ARD daughterboard.

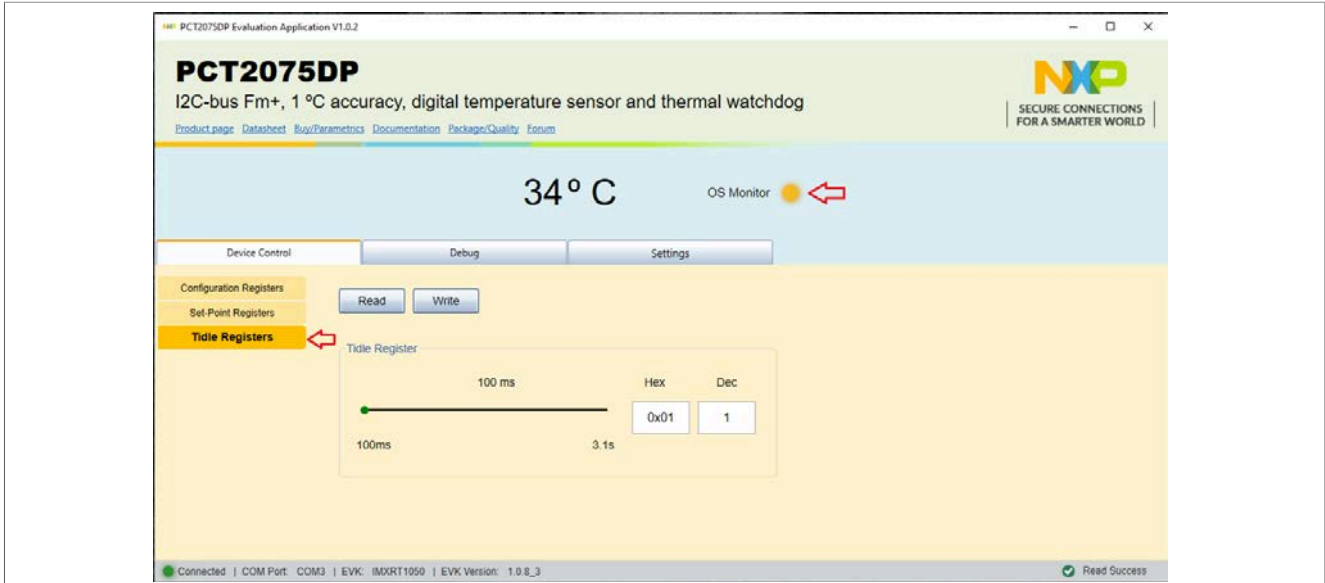


Figure 13. Graphical interface – “Device Control” / “Tidle Registers” tab activated

The last secondary tab (Figure 13) is **Tidle registers**. This parameter refers to sampling period of temperature measurement feature. Since the temperature variations are generally slow, the DUT IC offers to set the time between measurements, keeping the IC idle between measurements to save power. A dedicated register can be set, allowing modification of the idle time between 0.1 s and 3.1 s. From the interface the user can set this parameter, by dragging the slider, or by directly writing the register value in Hex or Dec representation. In the same fashion, the **Write** buttons set the register in the DUT IC, and the **Read** buttons allow the user to bring back the data from the internal registers of the IC to GUI.

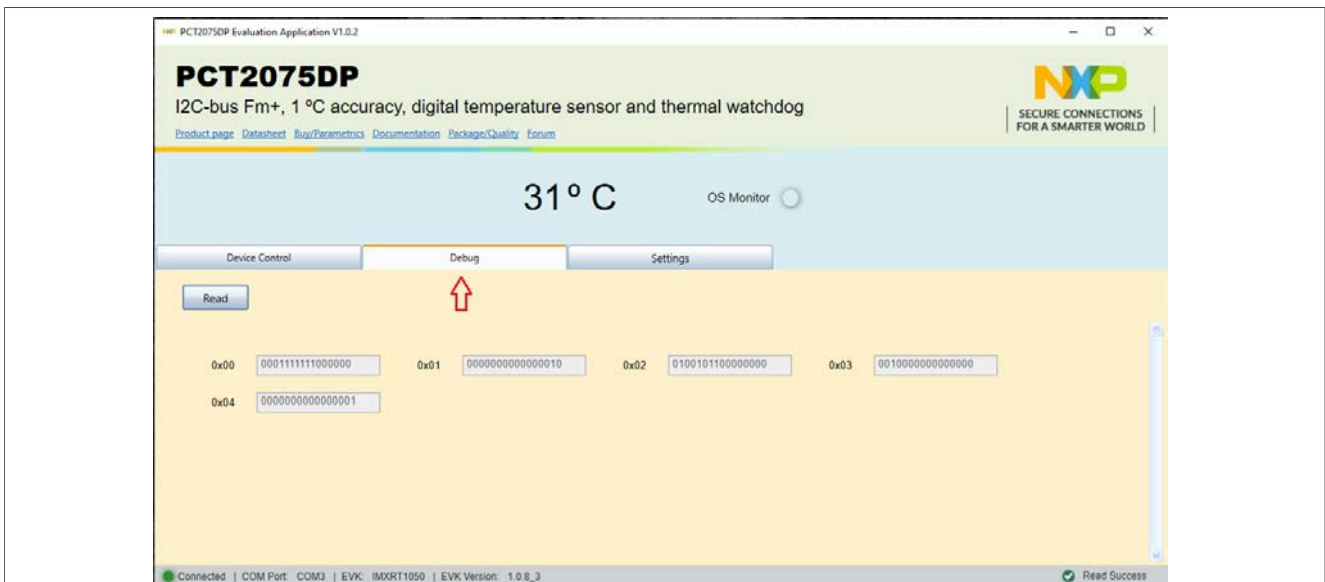


Figure 14. Graphical interface – “Debug” tab activated

Finally, the last main tab is **Debug**. When selected, the corresponding window is shown in Figure 14. When the **Read** button is clicked, all internal registers of the IC are

read, and displayed on the GUI. For details regarding the register map, see PCT2075 datasheet.

8 Abbreviations

Table 2. Abbreviations

Acronym	Description
DUT	Device Under Test
ESD	Electro Static Discharge
EVK	Evaluation Board
GUI	Graphical User Interface
I ² C-bus	Inter-Integrated Circuit bus
IC	Integrated Circuit
LED	Light Emitting Diode
OS	Overtemp Shutdown
PC	Personal Computer
USB	Universal Serial Bus

9 References

- [1] **MIMXRT1050-EVK** — [i.MX RT1050 Evaluation Kit](#)
- [2] **LPC55S69-EVK** — <https://www.nxp.com/design/development-boards/lpcxpresso-boards/lpcxpresso55s69-development-board:LPC55S69-EVK>
- [3] **8MMINILPD4-EVK** — <https://www.nxp.com/design/development-boards/i-mx-evaluation-and-development-boards/evaluation-kit-for-the-i-mx-8m-mini-applications-processor:8MMINILPD4-EVK>

10 Legal information

10.1 Definitions

Draft — A draft status on a document indicates that the content is still under internal review and subject to formal approval, which may result in modifications or additions. NXP Semiconductors does not give any representations or warranties as to the accuracy or completeness of information included in a draft version of a document and shall have no liability for the consequences of use of such information.

10.2 Disclaimers

Limited warranty and liability — Information in this document is believed to be accurate and reliable. However, NXP Semiconductors does not give any representations or warranties, expressed or implied, as to the accuracy or completeness of such information and shall have no liability for the consequences of use of such information. NXP Semiconductors takes no responsibility for the content in this document if provided by an information source outside of NXP Semiconductors. In no event shall NXP Semiconductors be liable for any indirect, incidental, punitive, special or consequential damages (including - without limitation - lost profits, lost savings, business interruption, costs related to the removal or replacement of any products or rework charges) whether or not such damages are based on tort (including negligence), warranty, breach of contract or any other legal theory. Notwithstanding any damages that customer might incur for any reason whatsoever, NXP Semiconductors' aggregate and cumulative liability towards customer for the products described herein shall be limited in accordance with the Terms and conditions of commercial sale of NXP Semiconductors.

Right to make changes — NXP Semiconductors reserves the right to make changes to information published in this document, including without limitation specifications and product descriptions, at any time and without notice. This document supersedes and replaces all information supplied prior to the publication hereof.

Suitability for use — NXP Semiconductors products are not designed, authorized or warranted to be suitable for use in life support, life-critical or safety-critical systems or equipment, nor in applications where failure or malfunction of an NXP Semiconductors product can reasonably be expected to result in personal injury, death or severe property or environmental damage. NXP Semiconductors and its suppliers accept no liability for inclusion and/or use of NXP Semiconductors products in such equipment or applications and therefore such inclusion and/or use is at the customer's own risk.

Applications — Applications that are described herein for any of these products are for illustrative purposes only. NXP Semiconductors makes no representation or warranty that such applications will be suitable for the specified use without further testing or modification. Customers are responsible for the design and operation of their applications and products using NXP Semiconductors products, and NXP Semiconductors accepts no liability for any assistance with applications or customer product design. It is customer's sole responsibility to determine whether the NXP Semiconductors product is suitable and fit for the customer's applications and products planned, as well as for the planned application and use of customer's third party customer(s). Customers should provide appropriate design and operating safeguards to minimize the risks associated with their applications and products. NXP Semiconductors does not accept any liability related to any default, damage, costs or problem which is based on any weakness or default in the customer's applications or products, or

the application or use by customer's third party customer(s). Customer is responsible for doing all necessary testing for the customer's applications and products using NXP Semiconductors products in order to avoid a default of the applications and the products or of the application or use by customer's third party customer(s). NXP does not accept any liability in this respect.

Export control — This document as well as the item(s) described herein may be subject to export control regulations. Export might require a prior authorization from competent authorities.

Evaluation products — This product is provided on an "as is" and "with all faults" basis for evaluation purposes only. NXP Semiconductors, its affiliates and their suppliers expressly disclaim all warranties, whether express, implied or statutory, including but not limited to the implied warranties of non-infringement, merchantability and fitness for a particular purpose. The entire risk as to the quality, or arising out of the use or performance, of this product remains with customer. In no event shall NXP Semiconductors, its affiliates or their suppliers be liable to customer for any special, indirect, consequential, punitive or incidental damages (including without limitation damages for loss of business, business interruption, loss of use, loss of data or information, and the like) arising out of the use of or inability to use the product, whether or not based on tort (including negligence), strict liability, breach of contract, breach of warranty or any other theory, even if advised of the possibility of such damages. Notwithstanding any damages that customer might incur for any reason whatsoever (including without limitation, all damages referenced above and all direct or general damages), the entire liability of NXP Semiconductors, its affiliates and their suppliers and customer's exclusive remedy for all of the foregoing shall be limited to actual damages incurred by customer based on reasonable reliance up to the greater of the amount actually paid by customer for the product or five dollars (US\$5.00). The foregoing limitations, exclusions and disclaimers shall apply to the maximum extent permitted by applicable law, even if any remedy fails of its essential purpose.

Translations — A non-English (translated) version of a document is for reference only. The English version shall prevail in case of any discrepancy between the translated and English versions.

Security — Customer understands that all NXP products may be subject to unidentified or documented vulnerabilities. Customer is responsible for the design and operation of its applications and products throughout their lifecycles to reduce the effect of these vulnerabilities on customer's applications and products. Customer's responsibility also extends to other open and/or proprietary technologies supported by NXP products for use in customer's applications. NXP accepts no liability for any vulnerability. Customer should regularly check security updates from NXP and follow up appropriately. Customer shall select products with security features that best meet rules, regulations, and standards of the intended application and make the ultimate design decisions regarding its products and is solely responsible for compliance with all legal, regulatory, and security related requirements concerning its products, regardless of any information or support that may be provided by NXP. NXP has a Product Security Incident Response Team (PSIRT) (reachable at PSIRT@nxp.com) that manages the investigation, reporting, and solution release to security vulnerabilities of NXP products.

10.3 Trademarks

Notice: All referenced brands, product names, service names and trademarks are the property of their respective owners.

NXP — wordmark and logo are trademarks of NXP B.V.

Tables

Tab. 1.	Pin chart of Arduino connectors and their usage8	Tab. 2.	Abbreviations20
---------	--	---------	-----------------------

Figures

Fig. 1.	PCT2075DP-ARD board layout (top view) 6	Fig. 9.	PCT2075DP-ARD daughterboard / 8MMINILPD4-EVK board operation 15
Fig. 2.	PCT2075DP-ARD board, top view 7	Fig. 10.	Graphical interface at start-up (“Settings” tab activated by default) 16
Fig. 3.	PCT2075DP-ARD board, bottom view 7	Fig. 11.	Graphical interface – “Device Control” / “Configuration Registers” tab activated 17
Fig. 4.	PCT2075DP-ARD daughterboard and IMXXRT1050 EVK board, before starting 10	Fig. 12.	Graphical interface – “Device Control” / “Set-Point Registers” tab activated 18
Fig. 5.	PCT2075DP-ARD daughterboard / IMXXRT1050 EVK board assembly 11	Fig. 13.	Graphical interface – “Device Control” / “Tidle Registers” tab activated 19
Fig. 6.	PCT2075DP-ARD daughterboard and LPC55S69-EVK motherboard 12	Fig. 14.	Graphical interface – “Debug” tab activated 19
Fig. 7.	PCT2075DP-ARD daughterboard / LPC55S69-EVK board assembly 13		
Fig. 8.	PCT2075DP-ARD daughterboard, IMX8MMINI-IARD interposer board, and 8MMINILPD4-EVK board assembly 14		

Contents

1	Introduction	4
2	Finding kit resources and information on the NXP web site	4
2.1	Collaborate in the NXP community	4
3	Getting ready	4
3.1	Kit contents	4
3.2	Assumptions	5
3.3	Static handling requirements	5
3.4	Minimum system requirements	5
4	Getting to know the hardware	5
4.1	PCT2075DP-ARD features	5
4.2	Kit featured components	5
4.2.1	Board layout and component placement	6
4.2.2	Arduino port	8
4.3	Schematic, board layout and bill of materials	8
5	Installing and configuring software and tools	9
6	Configuring the hardware	9
6.1	Using PCT2075DP-ARD with MIMXRT1050-EVK board	9
6.2	Using PCT2075DP-ARD with LPC55S69-EVK board	11
6.3	Using PCT2075DP-ARD with 8MMINILPD4-EVK board	13
6.4	Using PCT2075DP-ARD with another Arduino device	15
7	GUI description	15
8	Abbreviations	20
9	References	20
10	Legal information	21

Please be aware that important notices concerning this document and the product(s) described herein, have been included in section 'Legal information'.

© NXP B.V. 2021.

All rights reserved.

For more information, please visit: <http://www.nxp.com>

For sales office addresses, please send an email to: salesaddresses@nxp.com

Date of release: 22 February 2021
Document identifier: UM11580