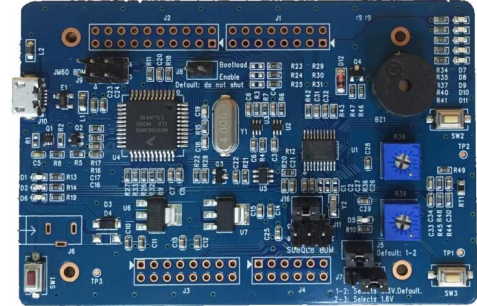


Quick Start Guide S08QL8-LITE

STEP-BY-STEP INSTRUCTIONS

1. Connect the S08QL8-LITE board to a PC using the included micro USB cable to Power/OSBDM Micro USB “J10.” A power LED will illuminate.



2. The S08QL8-LITE comes preprogrammed with a demo which shows all the peripheral functions on board, including the potentiometer, thermistor, and buzzer.
3. Download the sample code and Codewarrior IDE from nxp.com/S08QL8-Lite. Open the sample code with Codewarrior IDE. RUN!

S08QL8-LITE Sample Code (REV 0)

Example code to show how to configure and use the S08QL8-Lite board.

2019-07-01 08:30:00 7z 105.5 kB S08QL8_LITE_SAMPLES

Download

IDE and Build Tools (1)

CodeWarrior® for MCUs (Eclipse IDE) - ColdFire®, 56800/E DSC, Qorivva® 56xx, RS08/S08, S12Z - 11.1

Our CodeWarrior® for MCU's v11 integrates the development tools for the ColdFire®, ColdFire+, DSC, Kinetis®, Qorivva, RS08, S08 and S12Z architectures into a single product based on the Eclipse open development platform. Eclipse offers an excellent framework for building software development environments and is a standard framework used by many embedded software vendors.

Buy Options

STEP-BY-STEP INSTRUCTIONS

Debugger Support:

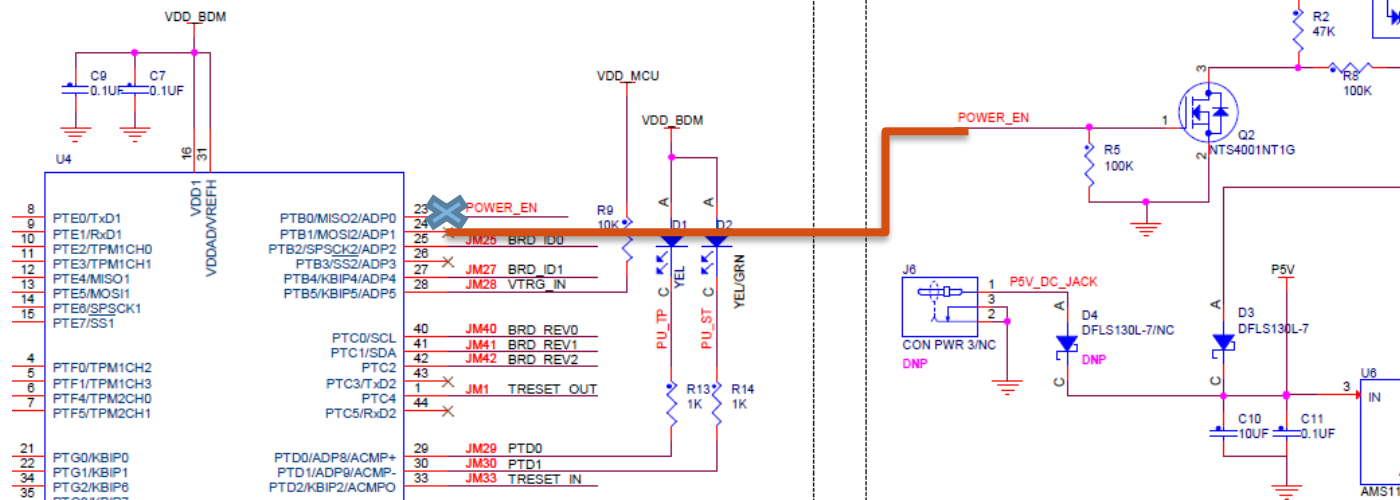
- ✓ Support download and debug through on-board OSBDM debugger
- ✓ Support download and debug through a Multilink debugger
- ✓ If there's low power mode in the code, using Multilink can directly debug; Using on-board debugger need re-work the board, refer to next page for re-work instructions

S08QL8-LITE OSBDM REWORK INSTRUCTIONS

OSBDM need re-work to debug low power mode

Steps:

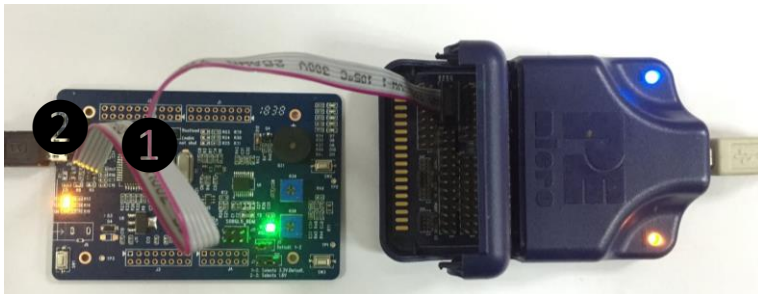
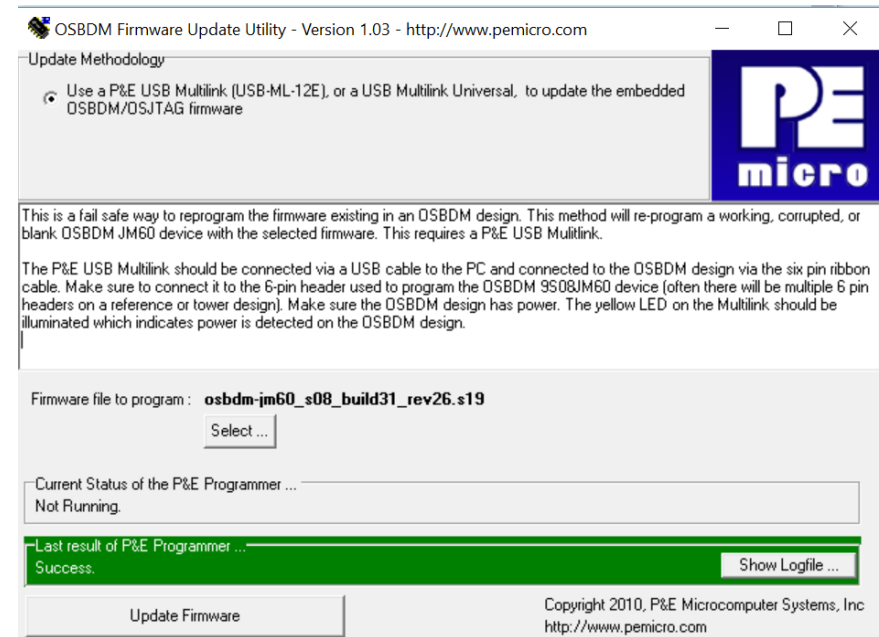
1. Update OSBDM firmware using Multilink debugger (refer to next page)
2. Cut the connection between pin-23 of JM60 and POWER_EN signal
3. Connect JM60 pin-24 to POWER_EN signal



OSBDM FIRMWARE UPDATE INSTRUCTIONS

Steps:

1. Download Firmware Updates & Recovery tool from PEMicro website (<http://www.pemicro.com/osbdm/>)
2. Connect multilink debugger with the board, power the board by USB cable
3. Open the P&E Firmware Recovery Utility (windows start -> PEMicro -> P&E Firmware Recovery Utility)
5. Select firmware. The firmware stored under directory S08QL8-LITE FAT\OSBDM
6. Click "Update Firmware"
7. Wait for programming done, then unplug the USB cable, unplug the multilink header, then plug the USB cable again to reboot the board
8. Done. Open computer management, should see the OSBDM device and COM port



5

- LibUSB-Win32 Devices
 - OSBDM/OSJTAG - Debug Port (<http://www.pemicro.com/osbdm>)
- Memory technology devices
- Mice and other pointing devices
- Monitors
- Network adapters
- Ports (COM & LPT)
 - ECP Printer Port (LPT1)
 - Intel(R) Active Management Technology - SOL (COM3)
 - OSBDM/OSJTAG - CDC Serial Port (<http://www.pemicro.com/osbdm>, <http://www.pemicro.com/opensda>) (COM8)



Get Started

Download installation
software and documentation at

[nxp.com/S08QL](https://www.nxp.com/S08QL)

[nxp.com/S08QL8-Lite](https://www.nxp.com/S08QL8-Lite)